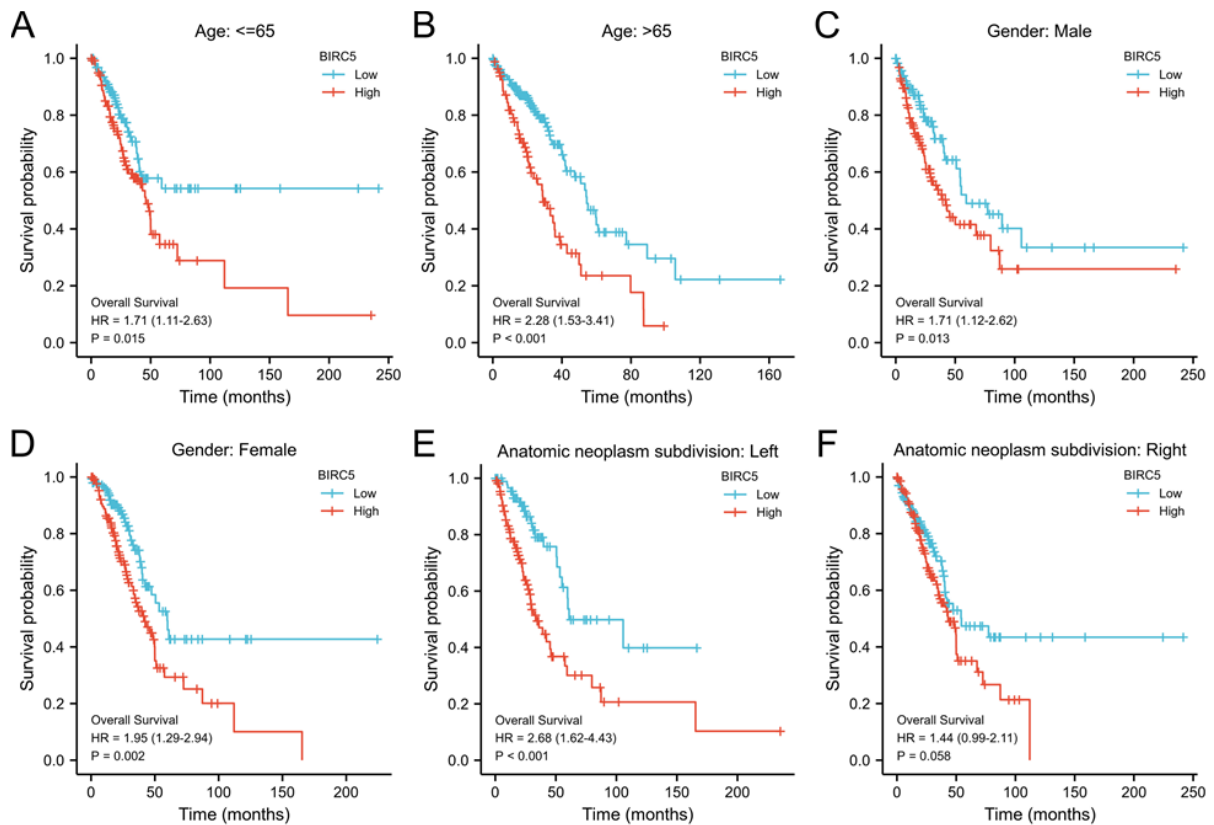


BIRC5 Expression Correlated with Immunosuppressive Phenotype and Predicted Inferior Response to Immunotherapy in Lung Adenocarcinoma

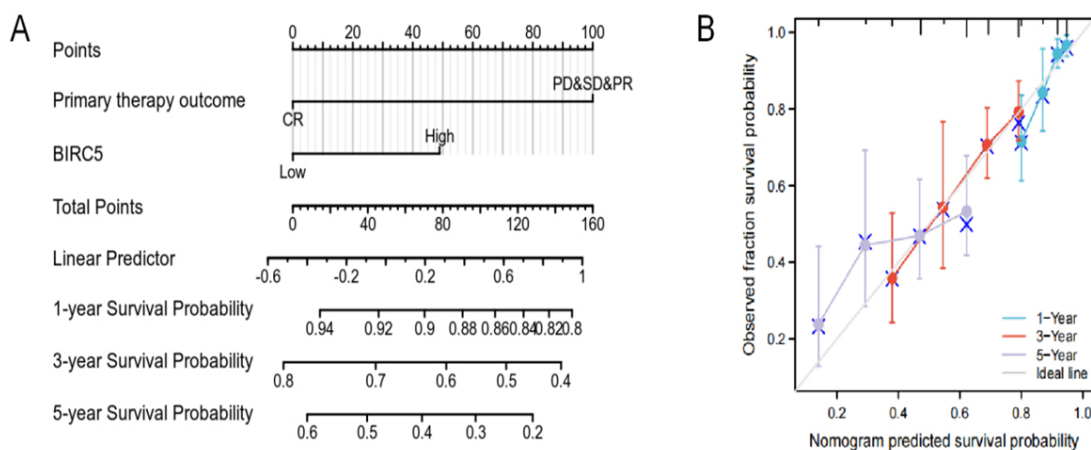
Shuo Yang¹, Xiaozhen Liu^{1*}, Shiqi Mao¹, ChuChu Shao¹, Xuefei Li¹, Chao Zhao¹, Yan Wang¹, Qiyu Fang¹, Bin Chen¹, Fengying Wu¹, Xiaoxia Chen¹, Shengxiang Ren¹, Xiaohui Chen² and Yu Jia¹

¹Department of Pathology, Shanghai Pulmonary Hospital, Shanghai, Fujian, China

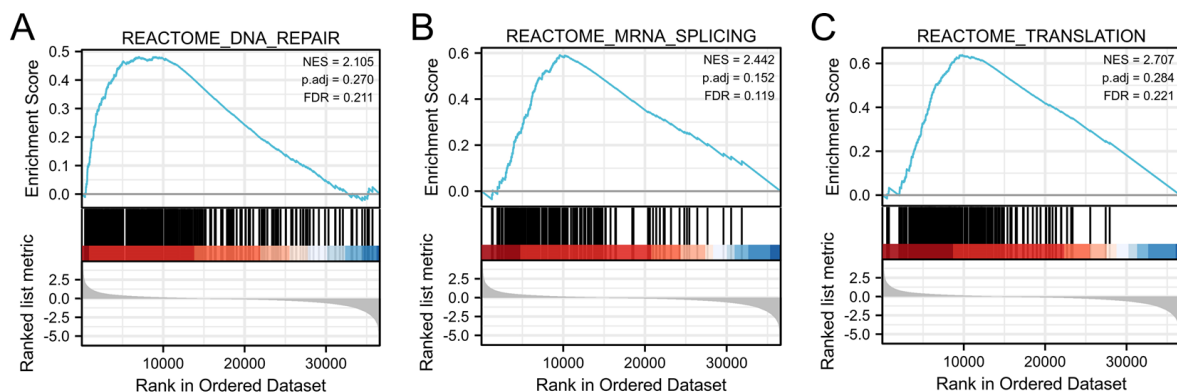
²Department of Pathology, Clinical Oncology School of Fujian Medical University, Fujian Cancer Hospital, Shanghai, Zhengmin, China



Supplemental figure S1: The Kaplan-Meier curves for subgroup analyses. A) Age ≤ 65 years; B) Age>65 years; C) Male; D) Female; E) The left of anatomic neoplasm subdivision; F) The right of anatomic neoplasm subdivision.



Supplemental figure S2: The role of *BIRC5* in predicting the prognosis of LUAD patients. A) Terminology diagram; B) Calibration curve.



Supplemental figure S3: GSEA analyses in LUAD patients with high expression of *BIRC5* compared with those with low expression. A) DNA repair pathway; B) mRNA splicing pathway; C) Translation. NES: Normalized Enrichment Score; ADJ: Adjusted; FDR: False Discovery Rate.