

Effect of Lewy Bodies on Mitochondrial DNA Copy Numbers and Deletion Burden in Parkinson's Disease Substantia nigra Neurons

Knarik Arkun^{1*}, Ann C Rice^{2,3} and James P Bennett²⁻⁵

¹Department of Pathology, Virginia Commonwealth University, Richmond VA, 23298

²Parkinson's and Movement Disorder Center, Virginia Commonwealth University, Richmond VA, USA

³Department of Neurology, Virginia Commonwealth University, Richmond VA, 23298

⁴Psychiatry, Virginia Commonwealth University, Richmond VA, 23298

⁵Physiology/Biophysics, Virginia Commonwealth University, Richmond VA, 23298

*Corresponding author: Knarik Arkun MD, Department of Pathology and Laboratory Medicine, Tufts Medical Center Boston, MA 01940, USA, Tel: 617-636-5031; Fax: 617-636-8302, E-mail: karkun@tuftsmedicalcenter.org

Received date: Nov 7, 2014, Accepted date: Dec 31, 2014, Published date: Jan 7, 2015

Copyright: © 2015 Arkun K et al. This is an open-access article distributed under the terms of the Creative Commons Attribution License, which permits unrestricted use, distribution, and reproduction in any medium, provided the original author and source are credited.

Abstract

Objective: Our objective was to evaluate mitochondrial DNA (mtDNA) gene copy numbers in substantia nigra neurons from post-mortem Parkinson's Disease cases and determine if the presence of Lewy bodies (LBs) altered mtDNA copy numbers or changed apparent deletion of mtDNAs.

Methods: We used laser capture micro dissection to isolate neuromelanin-containing cells with or without Lewy bodies from 6 Parkinson's Disease cases. Anti-alpha-synuclein immunohistochemistry was used to identify Lewy bodies in flash frozen tissue. Cells were collected in triplicate groups of 15 cells (LB (+) or LB (-)) from each case, and DNA was extracted with proteinase K-containing buffer. mtDNA copy number was determined by quantitative PCR for 4 genes distributed around the mitochondrial genome (12S rRNA; ND2; CO3; ND4) and normalized to a copy number standard curve of human mtDNA run on the same plate.

Results: We found an average ~4-fold higher mtDNA copy numbers in LB (+) neurons compared to LB (-) neurons from the same cases, but we observed substantial heterogeneity. ND4 appeared to be deleted in all cases. ND2 appeared to be deleted in one case as was CO3 in two cases.

Conclusion: Our studies indicate that in most cases of synucleinopathy, LB presence does not reduce, and appears to increase, mtDNA copy numbers in PD nigral neuromelanin-containing neurons.

Keywords: Laser capture microdissection; Alpha-synuclein immunohistochemistry; qPCR

Introduction

Parkinson disease (PD) is the most common neurodegenerative movement disorder. Braak, et al showed that PD is a brain-wide disease that in many cases appears pathologically as α -synuclein positive neurites in GI enteric neurons, then spreads into olfactory and spinal sympathetic neurons before appearing in caudal brainstem (dorsal motor vagal nucleus) [1]. Later involvement of substantia nigra (SN) and dopamine neuron death (Braak stage 3-4/6) produces the stereotypical, dopamine-responsive movement disorder. By this time α -synuclein pathology is found in and continues to expand into rostral limbic and cortical areas, producing neuropsychiatric symptoms so disabling to many PD sufferers.

As we age dopaminergic neurons develop Lewy bodies (LBs), which are inclusions containing many proteins, including α -synuclein. Mitochondrial dysfunction has also been characterized in PD [2-9].

Mitochondria have multiple copies of their own closed circular DNA (mtDNA) that encodes key proteins involved in respiration. Increasing levels of deleted mitochondrial DNA (mtDNA) in SN neurons were found with aging and at even higher levels in patients with PD [10]. Deleted mtDNA leads to impaired mitochondrial function if deletions exceed a certain threshold [10]. We tested the hypothesis that dopaminergic neurons with LBs represent impaired neurons and would be associated with reduced mtDNA copy numbers indicating more mitochondrial dysfunction than dopaminergic neurons from the same cases without LBs.

Methods and materials

Brain tissue

Fresh frozen tissue of midbrain sections from 6 (six) cases (age 60-91, 4M: 2F; Table 1) with clinical PD histories and extensive Lewy body formation on pathology was provided by the VCU Parkinson's Research Center Brain Tissue Resource Facility.

Case number	Age	Sex	Post interval mortem	Clinical diagnosis	Pathology
BTRF002	80	M	5	Parkinson's disease Deep brain stimulation	Lewy body pathology - Limbic (transitional) pattern * Infarct, recent/fresh, left parieto-occipital region * Infarct, remote/cavitated, right caudate and putamen region * Microinfarct, remote/cavitated, right anterior hippocampus * Atherosclerosis and arteriolosclerosis * Diffuse hypoxic/ischemic damage
BTRF003	73	M	15	14 years history of Parkinson's disease Gamma knife treatment of vestibular Schwannoma	Diffuse neocortical pattern of Lewy body type pathology/ Diffuse Lewy body disease * Early hypoxic/ischemic changes, mild * Telangiectasia, right pons * Metabolic gliosis * Atherosclerosis, mild * Arteriolosclerosis, moderate to severe
BTRF004	90	F	19	Parkinson's disease	Limbic (transitional) pattern of Lewy body type pathology Dementia with Lewy bodies clinical syndrome * Hypoxic/ischemic changes * Atherosclerosis/arteriolosclerosis
BTRF006	72	M	11.5	Parkinson's disease	Diffuse neocortical type of Lewy body disease * Encephalopathy, neurodegenerative, severe, consistent with Lewy body disease diffuse neocortical type * Metabolic gliosis, mild to moderate * Atherosclerosis and arteriolosclerosis, mild * Cerebral amyloid angiopathy (CAA), mild * Leptomeningeal fibrosis, mild * Enlarged pituitary gland (1.2 cm)
BTRF007	91	F	20	Lewy body dementia	Diffuse neocortical Lewy body pathology (Dementia with Lewy bodies) * Encephalopathy, neurodegenerative, severe to very severe, alpha-synucleinopathy * Cerebral amyloid angiopathy (CAA), moderate * Athero- and arteriosclerosis, moderate * Acute hypoxic ischemic change, moderate * Metabolic gliosis, moderate * Choroid plexus cyst
BTRF008	60	M	19	Multiple system atrophy vs Lewy body dementia	Neocortical (diffuse) Lewy body disease, severe * Encephalopathy, neurodegenerative with alpha-synucleinopathy * Pons, 0.3 cm remote infarct * Cerebellar infarcts, remote right x 2:1.0 x 0.4 x 0.2 cm and 0.6 x 0.5 x 0.2 cm * Occipital leukoencephalomalacia 1.0 x 0.7 x 0.3 cm * Metabolic gliosis * Arteriolosclerosis, mild

Table 1: Demographics of cases.

Fresh Frozen tissue, immunohistochemistry and capturing nigral cells with and without Lewy bodies

Ten micron section of flash/fresh frozen midbrain tissue from six cases were cut on a cryostat, fixed in 70% ethanol, hydrated and

stained for α -synuclein with anti- α -synuclein (Life Technologies, 1:100) followed by anti-mouse-alkaline phosphatase and vector red substrate according to the manufacturer's recommendations (Vector Labs). Cells were identified by the presence of neuromelanin and the presence or absence of α -synuclein (red intracytoplasmic staining,

Figure 1).Laser capture microdissection (LCM, Arcturus XT system) was used to collect 15 neurons with Lewy body inclusions and adjacent neurons without inclusions with agreement of two operators (KA and AR).From each case we collected 15 nigral neurons staining red by immunohistochemistry (Lewy body positive, LB (+) neurons) and 15 neurons without staining (no Lewy bodies, LB(-)) in triplicate (45 of each type of cell). From preliminary data we determined the need to capture 15 cells per cap to get reproducible cell capturing and sufficient DNA for qPCR analyses.

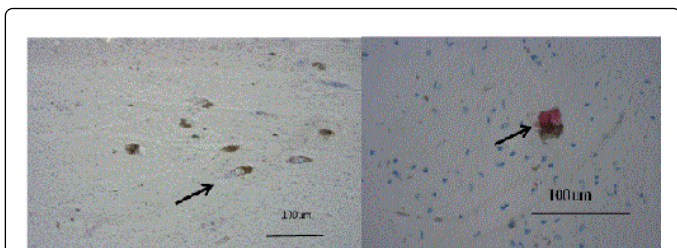


Figure 1: Representative images of captured nigral neurons with and without LB's. Fig. 1A shows a cell without LBs. Fig. 1B shows cells with LBs.

DNA extraction and qPCR

Caps were extracted overnight at 65oC with a proteinase K/tris buffer. Following extraction, the proteinase K was heat inactivated and the samples were diluted to 200µl. Multiplex quantitative PCR (qPCR) was run comparing to a standard curve of known amounts of mtDNA for 4 different genes around the mtDNA genome (ND2, ND4, COX III and 12S rRNA) as done previously by our group [11-15]. Primers were designed using Beacon Designer software. Quantitative PCR was performed in a BioRad CFX96 instrument using BioRadqPCR reagents following the manufacturer's recommendations.

Statistical analysis

A Two-way ANOVA test was used for comparing LB (+) and LB (-) cells for each gene and for analysis with normalization to relative ND2 gene levels for each case. We analyzed CO3/ND2 ratio and ND4/ND2 ratio in cells with and without Lewy bodies for each case to estimate mtDNA gene deletion abundance for CO3 and ND4.

Results

In all six cases from persons who died after prolonged histories of PD (Table 1), the LB-containing neurons (Figure 1) had an average 4 times higher mtDNA copy number compared to nigral neurons without LB's (Figure 2; Table 2,3).We observed substantial heterogeneity among our samples, with two cases showing LB (+)/LB (-) ratios slightly <1 for all mtDNA genes (Figure 2B). In addition, we found evidence suggesting gene deletions, in which similar levels of deletions were detected in both LB (+) and LB (-) neurons. ND4 deletion appeared to be present in all cases; CO3 also appeared to be deleted in two cases (#7 and 8) (Figure 3).

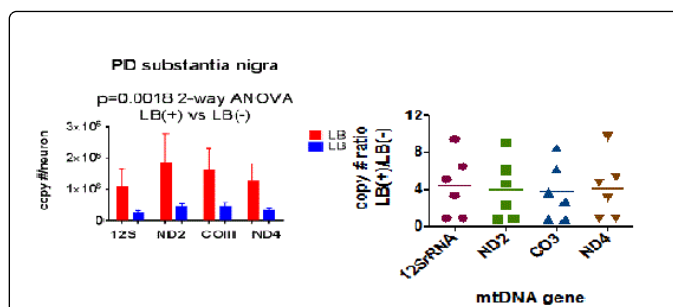


Figure 2: (left) Mean +/- SEM mitochondrial DNA gene copy numbers from LB (+) (red) and LB (-) (blue) neurons for the four mtDNA genes assayed by multiplex qPCR. (right) Plots showing the individual LB (+)/LB (-) ratios for each mtDNA gene assayed in 45 LB(+) and LB(-) neurons from each case.

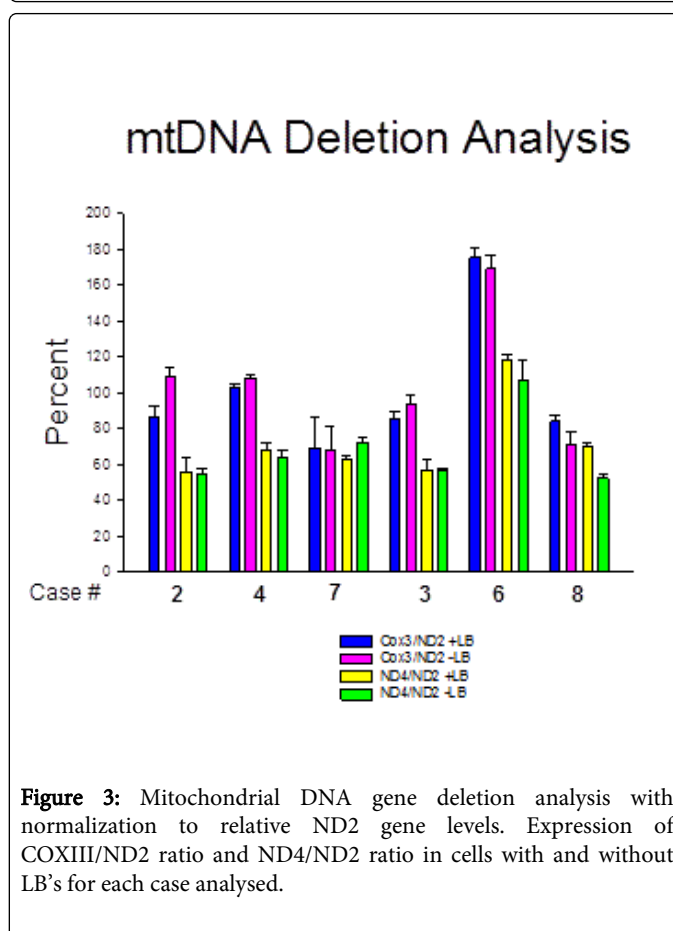


Figure 3: Mitochondrial DNA gene deletion analysis with normalization to relative ND2 gene levels. Expression of COXIII/ND2 ratio and ND4/ND2 ratio in cells with and without LB's for each case analysed.

ND2 probe	[6-FAM]CAGCAAGCAACCGCATCCATAAT[BHQ1a-Q]
ND2 sense	AAGCTGCCATCAAGTATTTC
ND2 antisense	GTAGTATTGGTTATGGTTCATTGTC
COX3 probe	[5TET]CGAAGCCGCCGCTGATACTG[BHQ1a-Q]
COX3 sense	TTTCACTTTACATCCAAACATCAC

COX3 antisense	CAATAGATGGAGACATACAGAAATAG
ND4 probe	[AminoC6+TxRed]AGCCAGAACGCCTGAACGCAG[BHQ2a-Q]
ND4 sense	TGGCTATCATCACCCGATG
ND4 antisense	GGTGTGTGAGTGTAAATTAGTC
12SrRNA PROBE	[Cy5]CGCCAGAACTACGAGCCACAG[BHQ3a-Q]
12SrRNA SP	CCTCAACAGTTAAATCAACAAAAC
12SrRNA ASP	CTGAGCAAGAGGTGGTGAC

Table 2: Primer sequences used for qPCR.

LB (+)/ LB (-) gene	2	4	7	3	6	8 Case
12S rRNA	5.12	9.5	6.52	0.9	0.91	3.35
ND2	4.65	9.05	6.14	0.85	0.8	2.32
COIII	3.72	8.59	6.27	0.78	0.83	2.73
ND4	4.77	9.07	5.31	0.86	0.88	3.1

Table 3: mtDNA gene ratios for LB (+)/LB (-) nigral neurons from each case examined

Discussion

As we age dopaminergic neurons may develop Lewy bodies, which are inclusions containing the protein α -synuclein. The redundant formation of Lewy bodies and Lewy neurites with premature neuronal loss are hallmarks of PD. The Lewy bodies are single or multiple round, pink (eosinophilic) intracytoplasmic neuronal inclusions with a paler halo around them on hematoxylin and eosin stain. The role of Lewy bodies in the pathogenesis of PD is still not clear.

We hypothesized that the presence of Lewy bodies would indicate nigral neurons with reduced bioenergetic capacity. Mitochondrial involvement and dysfunction are known to play roles in Lewy body pathology and neurodegeneration: high levels of deleted mtDNA in SN neurons was reported in the elderly and in patients with PD [10,16] along with alterations in genes encoding proteins that regulate mitochondrial function, such as mitochondrial autophagy and protection against oxidative stress [17,18].

We found that nigral neurons with Lewy bodies had an average ~four-fold increased copy number of mtDNA genes, compared with adjacent nigral neurons without Lewy bodies in the same case. This might indicate that cells with Lewy bodies are healthy and able to make mtDNA, and that Lewy bodies are not detrimental to mitochondrial function in individual PD nigral neurons. Alternatively, the LBs could contain dying mitochondria and therefore the increased mtDNA copy number may reflect more mitochondria that are not necessarily bioenergetically functional. In addition, nigral neurons with LBs could contain more mitochondria, but because of gene deletions in the mtDNA the mitochondria are not functioning

normally and are not producing more ATP. The presence of ~equal levels of apparent mtDNA gene deletions in LB (+) compared to LB (-) nigral neurons from each case argues against this latter explanation.

We found substantial heterogeneity among the cases in terms of the ratios of mtDNA genes in LB (+) compared to LB (-) nigral neurons. The two cases where LB (+)/LB (-) ratios were slightly <1 both came from persons with long-standing, clinical PD histories and diffuse neocortical patterns of LB presence at autopsy. Thus, the effects of LBs on mtDNA gene copy numbers appear to be heterogeneous across cases, mitigating against any kind of shared mechanism(s).

All of our cases had qPCR evidence of deletions in ND4, which is part of the recognized 5Kb "common" deletion. The deletions were present in nigral neurons with and without Lewy bodies, suggesting either that the deletion occurred early in the differentiation of these cell types or that some mechanism induced a similar deletion in different cells of the same individual. CO3 appeared to be deleted in two cases (Figure 3). These types of deletions have been described previously in PD. It has been also reported that significant accumulation (of more than 60%) mtDNA deletions can lead to neuronal loss [19]. At the same time our data demonstrate a significant accumulation of deletions without causing apparent cell death, which could possibly be due to an activation of repair or compensatory mechanisms. For example, in animal studies accumulation of mtDNA correlated with increased levels of OPA1, which is neuroprotective and can prevent pro-apoptotic remodeling of mitochondria [20]. So it is possible that accumulation of mtDNA deletions can trigger neuroprotective mechanisms.

Our studies are in contrast to those of Müller, et al., who used laser capture microdissection to isolate single LB (+) and LB (-) cells from the same cases, but did not detect significant differences in mtDNA copy numbers [5]. Differences in the techniques used could have contributed to the differences between our results and their results. We used a different laser capture system than they used and determined from preliminary data of numbers of cells/cap that we needed to capture 15 cells/cap to obtain a linear increase in mtDNA copy number with increasing number of cells captured. While, they isolated DNA from single cells and performed qPCR for mtDNA copy number, which could have resulted in greater variability and non-significant results. Other differences could be related to the specific samples analyzed.

As previously described the SN neurons in PD have increased mitochondrial defects and mitochondrial deletions [5,19,21,22]. Pathogenic mtDNA mutations can be point mutations or large scale deletions. However the relationship between mitochondrial dysfunction, nigral neurodegeneration and alpha synucleinopathy is unclear.

Other studies have evaluated post-mortem laser captured nigral neurons for mtDNA deletions [5,23]. One study compared laser captured single nigral neurons with and without neuromelanin [23]. Absence of neuromelanin is generally believed to be an earlier age, although these were in the same cases. In pigmented cells there were 49% deletions of mtDNA, whereas it was only 31% in non-pigmented cells. We did not sequence the mtDNA and cannot provide the percent of the mtDNA deleted in our samples, just relative presence or absence of specific genes.

In conclusion, our study indicates that in most but not all PD cases LBs do not reduce and appear to increase mtDNA copy numbers in nigral neuromelanin-containing neurons. This phenomenon was

heterogenous across our PD cases, being present in four cases and not present in two cases. With qPCR assay of specific mtDNA gene copy numbers we found evidence of similar levels of ND4 deletion in LB (+) compared to LB (-) neurons in all cases, and CO3 deletion in two cases. Further studies are needed to explore how LBs can increase mtDNA copy numbers, the pathways generating these mtDNA gene deletions, as well as whether accumulation of these deletions contribute to activation of neuroprotective mechanisms.

References

1. Braak H, Bohl JR, Muller CM, Rub U, de Vos RA, et al. (2006) Stanley Fahn Lecture 2005: The staging procedure for the inclusion body pathology associated with sporadic Parkinson's disease reconsidered. *MovDisord* 21: 2042-2051.
2. Cronin-Furman EN, Borland MK, Bergquist KE, Bennett JP, Jr., Trimmer PA (2013) Mitochondrial quality, dynamics and functional capacity in Parkinson's disease cybrid cell lines selected for Lewy body expression. *MolNeurodegener* 8: 6.
3. Borland MK, Mohanakumar KP, Rubinstein JD, Keeney PM, Xie J, et al. (2009) Relationships among molecular genetic and respiratory properties of Parkinson's disease cybrid cells show similarities to Parkinson's brain tissues. *BiochimBiophysActa* 1792: 68-74.
4. Johri A, Beal MF (2012) Mitochondrial dysfunction in neurodegenerative diseases. *J PharmacolExpTher* 342: 619-630.
5. Muller SK, Bender A, Laub C, Hogen T, Schlaudraff F, et al. (2013) Lewy body pathology is associated with mitochondrial DNA damage in Parkinson's disease. *Neurobiol Aging* 34: 2231-2233.
6. Swerdlow RH, Parks JK, Davis JN, 2nd, Cassarino DS, Trimmer PA, et al. (1998) Matrilial inheritance of complex I dysfunction in a multigenerational Parkinson's disease family. *Ann Neurol* 44: 873-881.
7. Trimmer PA, Bennett JP, Jr. (2009) The cybrid model of sporadic Parkinson's disease. *ExpNeurol* 218: 320-325.
8. Trimmer PA, Borland MK, Keeney PM, Bennett JP, Jr., Parker WD, Jr. (2004) Parkinson's disease transgenic mitochondrial cybrids generate Lewy inclusion bodies. *J Neurochem* 88: 800-812.
9. Trimmer PA, Swerdlow RH, Parks JK, Keeney P, Bennett JP, Jr., et al. (2000) Abnormal mitochondrial morphology in sporadic Parkinson's and Alzheimer's disease cybrid cell lines. *ExpNeurol* 162: 37-50.
10. Bender A, Krishnan KJ, Morris CM, Taylor GA, Reeve AK, et al. (2006) High levels of mitochondrial DNA deletions in substantianigra neurons in aging and Parkinson disease. *Nat Genet* 38: 515-517.
11. Rice AC, Keeney PM, Algarzae NK, Ladd AC, Thomas RR, et al. (2014) Mitochondrial DNA copy numbers in pyramidal neurons are decreased and mitochondrial biogenesis transcriptomesignaling is disrupted in Alzheimer's disease hippocampi. *J Alzheimers Dis* 40: 319-330.
12. Keeney PM, Quigley CK, Dunham LD, Papageorge CM, Iyer S, et al. (2009) Mitochondrial gene therapy augments mitochondrial physiology in a Parkinson's disease cell model. *Hum Gene Ther* 20: 897-907.
13. Thomas RR, Khan SM, Portell FR, Smigrodzki RM, Bennett JP, Jr. (2011) Recombinant human mitochondrial transcription factor A stimulates mitochondrial biogenesis and ATP synthesis, improves motor function after MPTP, reduces oxidative stress and increases survival after endotoxin. *Mitochondrion* 11: 108-118.
14. Iyer S, Thomas RR, Portell FR, Dunham LD, Quigley CK, et al. (2009) Recombinant mitochondrial transcription factor A with N-terminal mitochondrial transduction domain increases respiration and mitochondrial gene expression. *Mitochondrion* 9: 196-203.
15. Young-Collier KJ, McArdle M, Bennett JP (2012) The dying of the light: mitochondrial failure in Alzheimer's disease. *J Alzheimers Dis* 28: 771-781.
16. Kraytsberg Y, Kudryavtseva E, McKee AC, Geula C, Kowall NW, et al. (2006) Mitochondrial DNA deletions are abundant and cause functional impairment in aged human substantianigra neurons. *Nat Genet* 38: 518-520.
17. Grenier K, McLelland GL, Fon EA (2013) Parkin- and PINK1-Dependent Mitophagy in Neurons: Will the Real Pathway Please Stand Up? *Front Neurol* 4: 100.
18. Janda E, Isidoro C, Carresi C, Mollace V (2012) Defective autophagy in Parkinson's disease: role of oxidative stress. *MolNeurobiol* 46: 639-661.
19. Lin MT, Cantuti-Castelvetri I, Zheng K, Jackson KE, Tan YB, et al. (2012) Somatic mitochondrial DNA mutations in early Parkinson and incidental Lewy body disease. *Ann Neurol* 71: 850-854.
20. Ramonet D, Perier C, Recasens A, Dehay B, Bové J, et al. (2013) Optic atrophy 1 mediates mitochondria remodeling and dopaminergic neurodegeneration linked to complex I deficiency. *Cell Death Differ* 20: 77-85.
21. Perier C, Bender A, Garcia-Arumi E, Melia MJ, Bove J, et al. (2013) Accumulation of mitochondrial DNA deletions within dopaminergic neurons triggers neuroprotective mechanisms. *Brain* 136: 2369-2378.
22. Wallace DC (2010) Mitochondrial DNA mutations in disease and aging. *Environ Mol Mutagen* 51: 440-450.
23. Elstner M, Morris CM, Heim K, Bender A, Mehta D, et al. (2011) Expression analysis of dopaminergic neurons in Parkinson's disease and aging links transcriptional dysregulation of energy metabolism to cell death. *ActaNeuropathol* 122: 75-86.