

# Electrical Impedance Tomography in Rectangular Object Using Data Collection System Based on Absolute Boundary Potential Measurement

Dudi Darmawan<sup>1,3\*</sup>, Deddy Kurniadi<sup>1</sup>, Suyatman<sup>2</sup> and Janivita<sup>1</sup>

<sup>1</sup>Instrumentation and Control Research Group, Faculty of Industrial Engineering, Institut Teknologi Bandung, Jl. Ganesha 10, Bandung 40132, Indonesia

<sup>2</sup>Engineering Physics Research Group, Faculty of Industrial Engineering, Institut Teknologi Bandung, Jl. Ganesha 10, Bandung 40132, Indonesia

<sup>3</sup>NDT Research Group, Engineering Physics Study Program, Telkom University, Jl. Telekomunikasi 1, Bandung 40257, Indonesia

## Abstract

One of the problems in Electrical Impedance Tomography (EIT) is the ill-posed problem occurred in the reconstruction process. Beside addition of the data number and developing of reconstruction method, using of data collection system also determine the quality of image produced. This study is aimed to propose an absolute boundary potential to adjacent method. The result showed that adjacent method with absolute boundary potential give the better result compared to the use of relative boundary potential.

**Keywords:** EIT simulation; Rectangular object; Data collection system; Absolute boundary potential

## Introduction

Tomography methods have been developed in various parameters with different information. One of the most widely used information is the impedance [1-3]. The parameters of information used adjusted to the needs of tomography.

Electrical Impedance Tomography (EIT) is one application that generates tomography using impedance parameters to represent the distribution of physical properties of the object being observed. Determination of the impedance distribution is performed through a process of reconstruction of the measurement data. Measurement data used is in the form of boundary potential. Boundary potential is part of the potential distribution caused by injected currents.

Use of this boundary potential raises the ill-posed in the reconstruction process [2,4,5]. This is due to the amount of boundary potential data is not enough to reconstruct a number of object parameters. Thus increasing the numbers of measurement data theoretically provide much information on the model parameters [6]. Therefore it is expected to reduce the ill-posed problem. The addition of data is done through the addition of a point on the edge of the measuring object. However, this is accompanied by the addition of object parameters to be determined.

Another way is to improve the data collection system. The data collection system includes current injection method and boundary potential measurement method. Current injection method will give the configuration of the position of the injection and the ground currents point. This electrodes configuration determines the current density that is applied to the area of object [2] and gives a unique current distribution profile [7]. While the method of measuring boundary potential gives information of area condition which is taken. In general, potential measurement method that is often used is a relative measurement.

For a single current source, there are three methods used are adjacent, opposite, and cross [2]. Cross and opposite use an absolute potential measurement while an adjacent method use relative potential measurement [8]. The resulting value is quite small and often not observed. This condition is exacerbated by the high noise that occurs in EIT measurements [2,5]. Moreover, this method only represents a state between two neighbouring electrodes.

This study proposes using absolute potential to adjacent instead of relative potential as has been done in [7]. This method produces a potential value of more scalable and can be separated from the noise that occurs. In addition, the absolute potential measurements can describe the state of the object wider between each electrode to the absolute point.

## Data Collection System in Rectangular Object

Data collection System is formed by configuring of current injection method and potential measurement method. Current injection method is a configuration of current source and current sink position. In adjacent, cross, and opposite data collection system, current injection method consists of a single point of current source and a single point of current sink. The direction of current source is into the object and the direction of current sink is come out from object. Both of these points have the same current value but opposite in sign. Potential measurement method consists of absolute and relative potential measurement. Absolute potential is taken as potential difference between each node of boundary potential and current sink potential which have zero potential. The data of relative potential is taken as potential difference between each node and the other certain node.

In opposite data collection system, current injection method is formed by source and sink current that going across to the center of object with absolute potential measurement. In cross data collection system, current injection methods are formed by source and sink current that facing each other with absolute potential measurement. The adjacent data collection system is formed by source and sinks current

**\*Corresponding author:** Dudi Dharmawan, Instrumentation and Control Research Group, Faculty of Industrial Engineering, Institut Teknologi Bandung, Jl. Ganesha 10, Bandung 40132, Indonesia, Tel: +62-813-20500247; E-mail: [dudidw@telkomuniversity.ac.id](mailto:dudidw@telkomuniversity.ac.id)

**Received** February 17, 2014; **Accepted** March 18, 2014; **Published** March 20, 2014

**Citation:** Darmawan D, Kurniadi D, Suyatman, Janivita (2014) Electrical Impedance Tomography in Rectangular Object Using Data Collection System Based on Absolute Boundary Potential Measurement. OMICS J Radiol 3: 160. doi:10.4172/2167-7964.1000160

**Copyright:** © 2014 Darmawan D, et al. This is an open-access article distributed under the terms of the Creative Commons Attribution License, which permits unrestricted use, distribution, and reproduction in any medium, provided the original author and source are credited.

that neighbouring each other with relative potential measurement. In the proposed data collection system, adjacent data collection system is formed with absolute potential measurement. This method is called an absolute adjacent.

In this study, data is formed by 16 boundary nodes which have difference position with 16 nodes of current injection on rectangular object. Current injection and boundary potential measurement point of four data collection system above are shown in Figure 1.

## Forward and Invers Model

### Forward model

In EIT, the current is injected through several points in the surface of the object. The current will propagate in the object that has specific conductivity distribution. The given current arises the electric potential distribution, which follow the basic electrostatic law.

Basic law for EIT problem is covered by Laplace equation such as equation (1).

$$\nabla \cdot [\sigma \nabla V(r)] = 0 \quad (1)$$

where  $V$  is the electric potential (in volts), and  $\sigma$  is the conductivity of the material. Boundary potential and current density condition in the surface are formed by equations (2) and (3).

$$V = V_0 \text{ on } \partial\Omega \quad (2)$$

$$\sigma \frac{\partial V}{\partial n} = J_0 \text{ on } \partial\Omega \quad (3)$$

Forward model is a solution of equation (1) for electric potential distribution if the object conductivity distribution is given. Equation

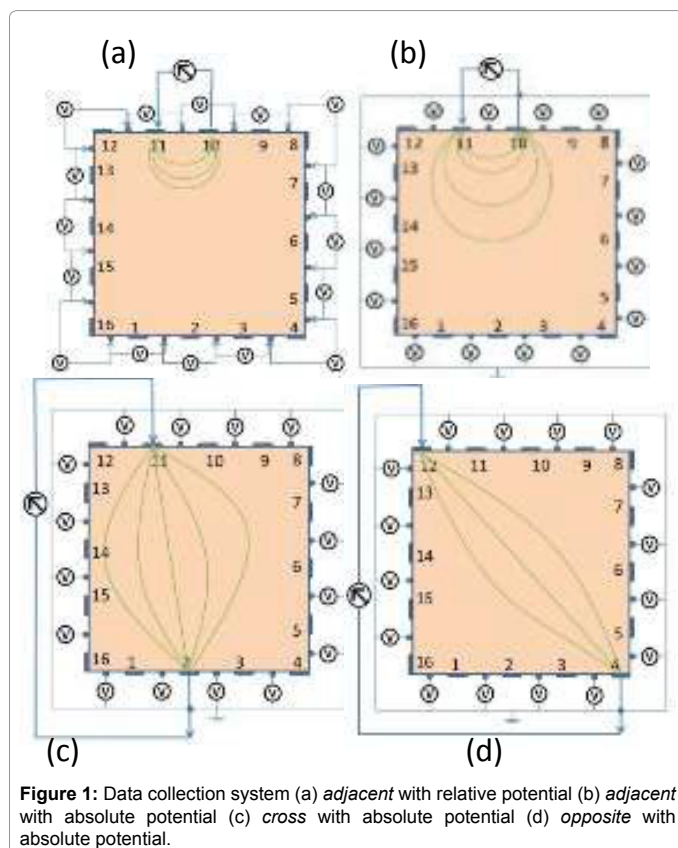


Figure 1: Data collection system (a) adjacent with relative potential (b) adjacent with absolute potential (c) cross with absolute potential (d) opposite with absolute potential.

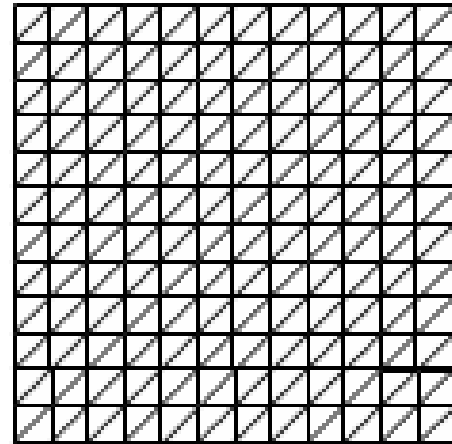


Figure 2: Triangular element in rectangular object.

(1) shows a non-linear relationship between conductivity and electrical potential. Analytic solution of electric potential distribution is hard to find.

Equations (1), (2) and (3) can be solved numerically using FEM. In this work, rectangular object is divided into triangular small elements by assuming each element has a conductivity of a homogeneous field. FEM give the result of linear equation system as equation (4).

$$YV=I \quad (4)$$

with  $Y$  is an admittance matrix and  $I$  is current vector. Potential in each node is acquired by changing equation (4) become equation (5).

$$V = Y^{-1}I \quad (5)$$

while boundary potential is acquired by manipulating of equation (5) to equation (6).

$$V_{bound} = T_r \text{vec}(V) \quad (6)$$

where

$V_{bound}$ =boundary potential

$T_r$ =transformation matrix

In this study, regular triangular is used as shown in Figure 2.

### Invers model

In this study, linearization method is used in the reconstruction process. It is done to obtain the conductivity distribution of the object. This method assumes the conductivity changes on the object boundary will result in potential changes linearly [6,7], as equation 7.

To validate this forward model, an absolute adjacent collection method is used to obtain measurement data of potential boundaries. Experiments carried out with the necessary tools consist of a signal generator, power supply, constant current source circuit, oscilloscope, multimeter, and phantom object, as shown in Figure 4.

$$[\delta\sigma]_{(px1)} = [S]_{pxq} [\delta V]_{(qx1)} \quad (7)$$

With

$P$ =element number

$q$ =electrode number

$[\delta V]$  = matrix of boundary potential change

$[\delta \sigma]$  = matrix of conductivity distribution change

$[S]$  = sensitivity matrix

However, because the matrix  $[S]$  is not square then the  $[\delta \sigma]$  does not be obtained directly, so the equation must be modified to

$$[\delta \sigma]_{(px1)} = ([S]^T [S])^{-1} [S]_{(pxq)}^T [\delta V]_{(qx1)} \quad (8)$$

But in general,  $[S]^T [S]$  is a singular matrix so that the matrix has no inverse. Regularization method is used to resolve the problem in order matrix has an inverse [5,9]. One is the Tikhonov regularization [5]. So the inverse equation becomes as equation 9.

$$[\delta \sigma]_{(px1)} = ([S]^T [S] + \alpha I)_{(pxq)}^{-1} [S]_{(pxq)}^T [\delta V]_{(qx1)} \quad (9)$$

with  $\alpha$  is the regularization parameter and  $I$  is the identity matrix.

### Potential Measurement for Forward Model Validation

Experiments were performed using the soil as a homogeneous object with a surface size of 13 cm×13 cm. To represent the state of anomalous objects, wood blocks having 2 cm×2 cm in size is used as a phantom object. Anomalies beam are addressed at the edge (side), two beams at the edge (twin), and a beam in the middle, like a Figure 3.

Retrieval of data using this absolute adjacent method is performed as much as four times. The first is the case of homogeneous objects without anomalies. The second is the case of homogeneous objects with anomalous side. The third is the case of homogeneous objects with anomalous twin. The fourth is the case of homogeneous objects with anomalous center. For each case, injection of current circumstances is done 16 times. At each injection current, potential data is taken from 16 electrodes. Thus for each state, boundary potential data is obtained as much as 16×16=256. For homogeneous object, boundary potential distribution measured and the results of the simulation were acquired as Figure 5.

Measurement data is then used to validate the model forward. The parameters used are the average relative error of the potential boundary through the following equation 10.

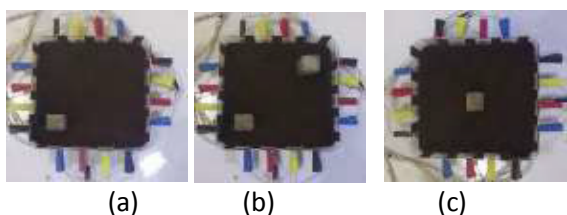


Figure 3: (a) side anomaly (b) twin anomaly (c) center anomaly.



Figure 4: Sets of experiment equipment.

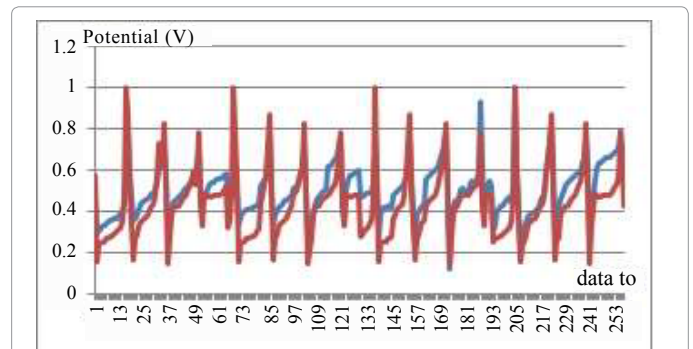


Figure 5: Boundary potential of measurement result (blue) in homogeneity object and simulation result (red) as comparator.

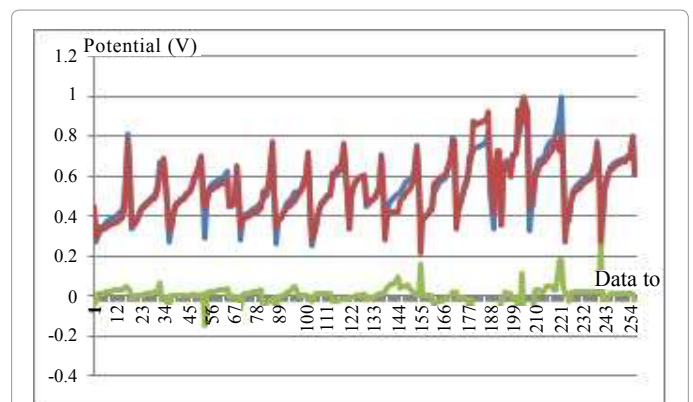


Figure 6: Boundary potential of measurement result in object with side anomaly (blue), without anomaly (red), and its difference (green).

$$\text{Average of error relative} = \frac{1}{N} \sum_{i=1}^N \frac{|V_s - V_E|}{V_E} \times 100\% \quad (10)$$

where

$V_E$  = Potential boundary of experiment

$V_S$  = Potential boundary of simulation

$N$  = Data number

The average relative error of data in Figure 5 is 21%. Value of this error could be caused by the selection of resistivity values used in the simulation has not been approached resistivity value of the actual object and are not guaranteed in homogeneous. However, if considered qualitatively, the data in Figure 5 shows the data pattern similarities between simulation and measurement results.

Qualitatively, the pattern of distribution of the measured data has the same pattern with the simulation results. From these results it can be stated that the forward model can be used for the reconstruction process. The results of measurements of the boundary potential distribution, for any anomalies such as Figures 6-8, cannot be used directly to identify anomalies. The process of reconstruction of the potential distribution has to be performed to get the resistivity distribution of the object. Boundary potential data, for any system of data collection, can be made using the forward model and reconstruction can be done.

### Reconstruction Results

Numerical computational is performed to test the reconstruction algorithm. The difference of resistivity distribution is calculated as a

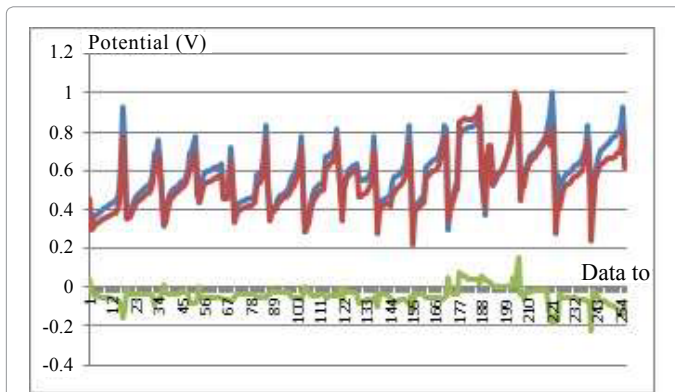


Figure 7: Boundary potential of measurement result in object with twin anomaly (blue), without anomaly (red) and its difference (green).

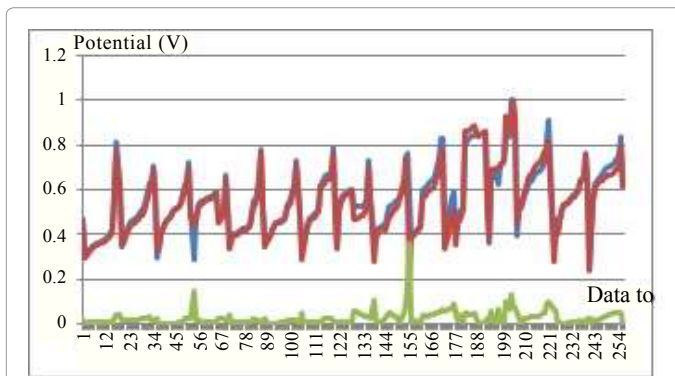


Figure 8: Boundary potential of measurement result in object with center anomaly (blue), without anomaly (red), and its difference (green).

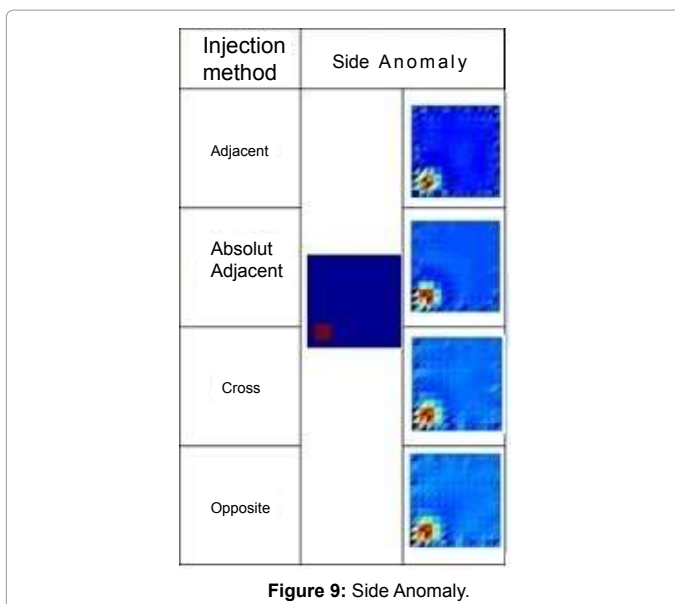


Figure 9: Side Anomaly.

parameter of reconstruction evaluation, as defined in equation 11. Measure of the success of the reconstruction can be determined by the smallest of the resistivity difference.

$$error = \frac{1}{N} \sqrt{\sum_i \sum_j (\rho_r[i, j] - \rho_u[i, j])^2} \quad (11)$$

where

$$\rho = \frac{1}{\sigma}$$

$error$  = resistivity difference

$N$  = data Number

$\sigma$  = conductivity

$\rho_r$  = reconstruction resistivity

$\rho_u$  = real resistivity

Linearization method, as stated in equation 9, is used for reconstruction process. Through the specific determining of  $\alpha$  (alpha) value, then simulation has produced the results of  $error$  and image as follows:

Images with corresponding to that result are described in Figures 9-11.

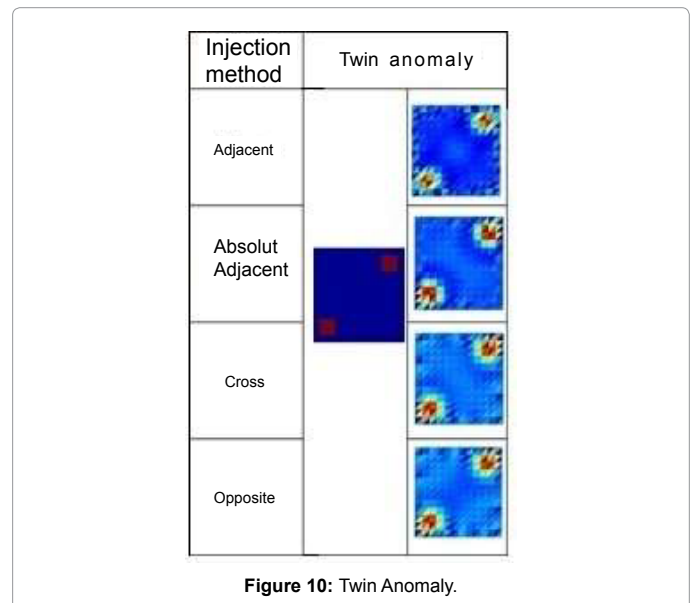


Figure 10: Twin Anomaly.

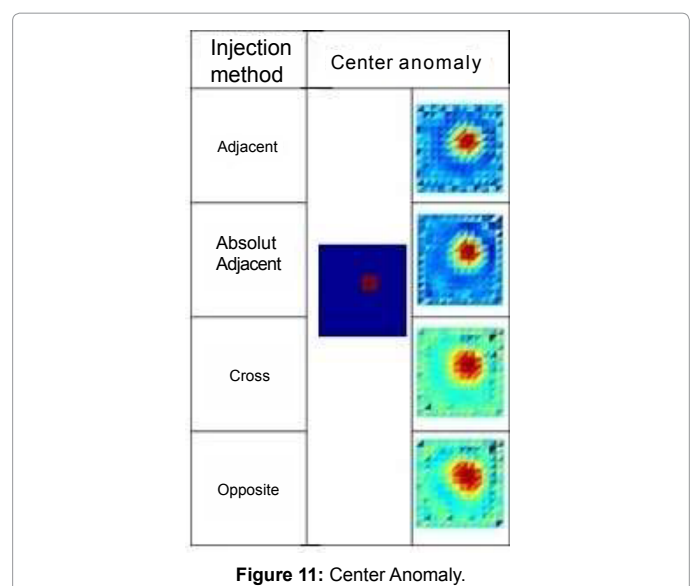


Figure 11: Center Anomaly.



Anomaly Type	Injection Method	Error	Alpha
Side	Adjacent	0,0095086	0,002492600
	Absolut adjacent	0,0086009	0,000016872
	Cross	0,0099252	0,000017378
	Opposite	0,0101330	0,000018436
Twin	Adjacent	0,0205530	0,002805400
	Absolut adjacent	0,0173620	0,000027074
	Cross	0,0204670	0,000019559
	Opposite	0,0200660	0,000021373
Center	Adjacent	0,0177230	0,0011558000
	Absolut adjacent	0,0165060	0,0000018381
	Cross	0,0197640	0,0000012152
	Opposite	0,0203240	0,0000010797

Table 1: Result of Error calculation.

In the Table 1, It is seen that the smallest error for all kinds of anomalies occur on adjacent absolute method. This error result is accordance with the image result. The results can be concluded is that the use of absolute boundary potential difference gives better results than the relative boundary potential difference. This is due to the absolute potential difference represents the state of the object much larger than the relative potential difference. For anomalies occurred at the edge (*side* and *twin*), can generally be detected quite well by all these methods. But for anomalies in the middle (*center*) shows the reconstruction results are not better results than the anomalies that are on the edge. These results emphasize the EIT problem is that the less sensitivity of parameter changes occurred far away from boundary.

## Conclusion

Anomalous conditions cannot be directly identified through an analysis of the boundary potential. The reconstruction process should be performed for getting resistivity distribution.

Four types of data collection, namely the cross, opposite, adjacent, and absolute adjacent, resulting reconstructed image corresponding to

the given numeric test data. But all of that data collection produces a less good reconstructions image for anomalies that are far away from the boundary, which is in the middle of the object. It shows insensitivity to changes of object parameters in far away from the boundary.

The use of an absolute boundary potential in adjacent method provide a better result compared to the relative boundary potential. In addition, it give more observable data and distinguishable from measurement noise.

## References

1. Borcea L (2002) Electrical impedance tomography. *Inverse Problems* 18: R99-R136.
2. Cheney M, Isaacson D, Newell JC (1999) Electrical impedance tomography. *SIAM Review* 45: 85-101.
3. Chen XY, Wang HX, Newell JC (2011) Lung ventilation reconstruction by electrical impedance tomography based on physical information. *Third International Conference on Measuring Technology and Mechatronics Automation*, IEEE Computer Society, 2011.
4. Gençer NG1, Ziya Y, Williamson SJ (1996) Electrical impedance tomography: induced-current imaging achieved with a multiple coil system. *IEEE Trans Biomed Eng* 43: 139-149.
5. Lionheart WR (2004) EIT reconstruction algorithms: pitfalls, challenges and recent developments. *Physiol Meas* 25: 125-142.
6. Tarantola A (2004) *Inverse problem theory and model parameter estimation*. Philadelphia: SIAM, 2004.
7. Vidya Sarode, Priya M Chimurkar, Alice N Cheeran (2012) Electrical impedance tomography (EIT) based medical imaging using finite element method (FEM). *International Journal of Engineering Science & Emerging Technologies* 1: 83-89.
8. Hua P, Webster JG, Tompkins WJ (1987) Effect of the measurement method on noise handling and image quality of EIT imaging. In *Proc. Ninth Int. Conf. IEEE Eng. In Med. And Biol. Society* 2: 1429-1430, IEEE, New York, USA, 1987.
9. Andrea Borsic (2002) *Regularisation methods for imaging from electrical measurements*. A thesis of Philosophy Doctor, Oxford Brookes University.