

A Rare Complication of Knee Entorse: Pellegrini-Stieda Syndrome

Jihad Boularab*, Hind Sahli, Zineb Izi and Meriem Edderaï

Department of radiology, Mohammed V military hospital, Rabat, Morocco

Abstract

Axial, coronal and sagittal views of knee MRI of a 56 years old man with recurrent knee pain following a knee sprain, showing a calcification in the soft tissue situated mesial to the medial femoral condyle (red arrows) corresponding to the ossification of the medial collateral ligament, suggesting the diagnosis of Pellegrini-Stieda syndrome.

Keywords: Pellegrini-Stieda; Posttraumatic; MRI; Ossification; Medial collateral ligament

Introduction

The Pellegrini-Stieda syndrome is relatively infrequent and is commonly associated with sporting injuries [1, 2]. It occurs within 11 days to 6 weeks after trauma and patients may be asymptomatic or present a local pain and swelling in the medial aspect of the knee (Figure1).

The diagnosis can be suggested on the X-ray, and confirmed by the

MRI which also delineates the extent of adhesion of the calcified mass to the MCL and the remaining ligamentous volume.

References

1. Mendes LFA, Pretterklieber ML, Cho JH, Garcia GM, Resnick DL, et al. (2006) Pellegrini-Stieda disease: a heterogeneous disorder not synonymous with ossification/calcification of the tibial collateral ligament-anatomic and imaging investigation. *Skeletal Radiol* 35: 916-922.
2. Miller TT (2009) Imaging of the medial and lateral ligaments of the knee. *Semin Musculoskelet Radiol* 13: 340-352.

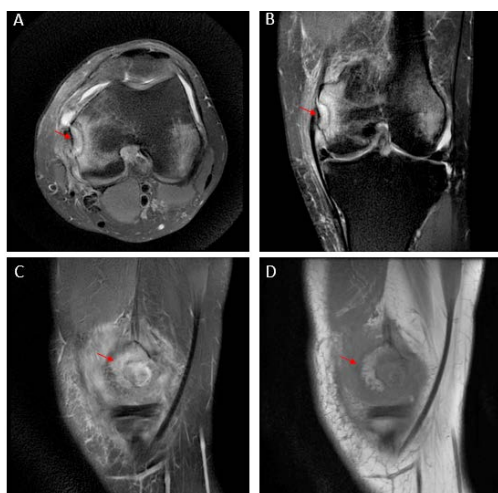


Figure 1: MRI of the knee on axial, coronal and sagittal T2 Fat Sat and T1 weighted images demonstrating the ossification of the medial collateral ligament (red arrow) suggesting the diagnosis of Pellegrini-Stieda syndrome.

*Corresponding author: Jihad Boularab, Department of radiology, Mohammed V military hospital, Rabat, Morocco, E-mail: boularabjihad@gmail.com

Received: 04-Jun-2022, Manuscript No. roa-22-66819; **Editor assigned:** 06-Jun-2022, PreQC No. roa-22-66819 (PQ); **Reviewed:** 20-Jun-2022, QC No. roa-22-66819; **Revised:** 23-Jun-2022, Manuscript No. roa-22-66819 (R); **Published:** 30-Jun-2022, DOI: 10.4172/2167-7964.1000389

Citation: Boularab J, Sahli H, Izi Z, Edderaï M (2022) A Rare Complication of Knee Entorse: Pellegrini-Stieda Syndrome. *OMICS J Radiol* 11: 389.

Copyright: © 2022 Boularab J, et al. This is an open-access article distributed under the terms of the Creative Commons Attribution License, which permits unrestricted use, distribution, and reproduction in any medium, provided the original author and source are credited.