

Secreted Clusterin (sCLU) Gene Silencing Enhances Chemosensitivity of A549 Cells to Cisplatin through AKT and ERK1/2 Pathways *In Vitro*

Mei Wang*, Xiangchun Li and Zongxiu Yin

Division of Respiratory medicine, The Affiliated Hospital of medical college, QingDao University, QingDao, Shan Dong Province, 266003, People's Republic of China

Abstract

Several studies have shown Secreted Clusterin (sCLU) silencing directed against sCLU mRNA in sCLU-rich lung cancer cell lines sensitized cells to chemotherapy. However, the molecular mechanisms underlying the effect of sCLU silencing on lung cancer cell chemosensitivity is not known. In the present study, we aimed to determine that vector expressing short hairpin RNA against sCLU RNA (sCLU-shRNA) enhances the chemosensitivity in human small cell lung cancer A549 cells *in vitro* by inhibition of phosphorylated ERK1/2 (p-ERK1/2) and Akt (p-Akt). The pCDNA3, 1-sCLU and control scrambled pCDNA3. 1 plasmid was constructed. We investigated the effects of sCLU overexpression by pCDNA3. 1-sCLU transfection on chemosensitivity to cisplatin (DDP) in A549 cells *in vitro*. We down-regulated sCLU expression by short hairpin RNA against sCLU RNA (sCLU-shRNA) and investigated the effects on chemosensitivity to DDP in A549 cells and A549^{DDP} *in vitro*. In order to confirm the correlation between sCLU and AKT and ERK1/2 signals, cells were treated with wortmannin and U0126. We found the chemotherapeutic agent DDP activated sCLU. Overexpression of sCLU increased cellular DDP chemoresistance in the A549^{DDP} and pCDNA3. 1-sCLU transfected A549 cells via inhibition DDP-induced apoptosis. Whereas sCLU knockdown induced chemosensitization in the S549 and A549^{DDP} cells via increase of DDP-induced apoptosis. sCLU overexpression activated pAkt Ser⁴⁷³ and pERK1/2^{Thr202/Tyr204}, and vice versa. Inhibition of pAkt Ser⁴⁷³ and pERK1/2^{Thr202/Tyr204} was sufficient to induce significant recovery in chemosensitivity to DDP in A549^{DDP} in the presence of sCLU overexpression. The chemotherapeutic agent DDP activated sCLU, which directly regulated pAkt and pERK1/2. This novel finding suggests that therapies directed against sCLU and its downstream signaling targets pAkt and pERK1/2 may have the potential to enhance the efficacy of DDP-based chemotherapy.

Keywords: Lung cancer; Chemotherapy; Clusterin; ERK; AKT

Introduction

Lung cancer, the leading cause of cancer death worldwide, can be divided into two types: Non-Small Cell Lung Cancer (NSCLC) and Small Cell Lung Cancer (SCLC). Non-Small-Cell Lung Cancer (NSCLC) comprises >75% of lung cancer cases making it the leading cause of cancer-related death. The prognosis for NSCLC patients is highly dependent on the stage at diagnosis, and despite efforts to develop early screening tools; a majority of tumors are detected at an advanced stage [1]. The therapies available to date for NSCLC treatment are surgery, radiotherapy, and chemotherapy. Because of the size and distribution of lung cancer, the cytoreductive surgery is not very effective for this disease and therefore chemotherapy and/or radiation are the only treatments of choice. Despite major advances in patient management, chemotherapy and radiotherapy, nearly 80% of the patients still die within 1 year of diagnosis and long-term survival is obtained only in 5-10% of the cases [2]. Chemoresistance occurs not only to clinically established therapeutic agents but also to novel targeted therapeutics. However, extensive stage disease has initial response rates to chemotherapy exceeding 70%; the disease almost invariably progresses and becomes fatal [3]. Both intrinsic and acquired mechanisms have been implicated in drug resistance but it remains controversial which mechanisms are responsible that lead to failure of therapy in cancer patients [4-6].

Clusterin is an enigmatic glycoprotein with a nearly ubiquitous tissue distribution. It plays important roles in various pathophysiological processes, including tissue remodeling, reproduction, lipid transport, complement regulation, and apoptosis. Clusterin appears to have two main isoforms that result from alternative splicing: The secreted and nuclear forms of clusterin have been reported to play different roles in human malignancies [7]. The secreted form of the CLU protein (sCLU) is a glycosylated protein of 76-80 kDa. Upregulation of sCLU mRNA

and protein levels detected in diverse disease states and *in vitro* systems have led to suggestions that it functions in membrane lipid recycling, in apoptotic cell death, and as a stress-induced secreted chaperone protein, amongst others [8].

It has found sCLU was overexpressed in a number of malignant tumors and has been proven to correlate closely with the chemoresistance of several cancer cells to chemotherapeutic agents [9-15]. Several *in vitro* and vivo studies have shown CLU silencing by Antisense Oligonucleotides (ASO) and small-interfering RNAs (siRNA) directed against CLU mRNA in CLU-rich lung cancer cell lines sensitized cells to chemotherapy and radiotherapy and decreased their metastatic potential [16-20]. Studies performed in lung cancer cell lines and animal models showed that sCLU is upregulated after exposure to chemo [19,21] and radiotherapy [20]. A potential role proposed for the protein is cytoprotective. However, the molecular mechanisms underlying the effect of sCLU overexpression on chemoresistance and cytoprotection in NSCLC is not known.

Activation of the phosphoinositide 3kinase (PI3K)/Akt signalling pathway has been linked with resistance to chemotherapeutic drugs,

***Corresponding author:** Mei Wang, Division of Respiratory medicine, The Affiliated Hospital of medical college, QingDao University, QingDao, Shan Dong Province, 266003. People's Republic of China, Tel: +86-0532-82915309; E-mail: wangmei2012729@126.com

Received January 18, 2014; **Accepted** February 24, 2014; **Published** February 26, 2014

Citation: Wang M, Li X, Yin Z (2014) Secreted Clusterin (sCLU) Gene Silencing Enhances Chemosensitivity of A549 Cells to Cisplatin through AKT and ERK1/2 Pathways *In Vitro*. J Clin Exp Pathol 4: 162. doi:10.4172/2161-0681.1000162

Copyright: © 2014 Wang M, et al. This is an open-access article distributed under the terms of the Creative Commons Attribution License, which permits unrestricted use, distribution, and reproduction in any medium, provided the original author and source are credited.

and its downregulation, by means of PI3K inhibitors, lowers resistance to various types of therapy in tumour cell lines [22-24]. Mitogen-activated protein kinase/Extracellular signal Regulated Kinase (ERK) pathway plays an essential role in the development and progression of various tumors. ERK1/2 is a key component of this pathway. The hyperactivation of ERK1/2 also has been shown to promote resistance to chemotherapy drugs in many cancer cells [25-27]. Inhibiting the action of ERK1/2 prevents tumor cell proliferation, promote apoptosis and reverse resistance to therapy [28,29].

In lung cancer, phosphorylated ERK1/2 (p-ERK1/2) and Akt (p-Akt) can be further stimulated by chemotherapeutics, and targeting the ERK1/2 or Akt pathway has been reported to sensitize cancer cells to therapy [30-32]. We have also recently found ERK1/2 and Akt pathways contribute to cisplatin resistance in human small cell lung cancer A549 cells, and blocking these pathways may be an effective strategy for improving the efficacy of cisplatin as anticancer treatment [33]. Tang, et al. [28] has found knockdown of clusterin sensitizes pancreatic cancer cells to gemcitabine by inhibition of gemcitabine-induced clusterin-pERK1/2 activation. In breast cancer, clusterin may regulate the aggressive behaviour of human breast cancer cells through modulation of ERK1/2 signalling and MMP9 expression [34]. In lung cancer cells, clusterin regulate EMT and aggressive behaviour through modulating ERK1/2 signalling and Slug expression [16]. We therefore suggested ERK1/2 signalling is regulated by clusterin. Many studies in literature have reported that Akt pathway may also regulated by clusterin in cancers including lung cancer [17,35,36].

Given the importance of clusterin in regulation of AKT and ERK1/2 signaling, we hypothesized that targeting clusterin might represent a novel approach to modulate the chemoresistance of lung cancer cells to cisplatin. We present the first evidence indicating a role for clusterin in determining lung cancer cellular chemoresistance to cisplatin, the mechanism by which is via regulating AKT and ERK1/2 signaling.

Materials and Methods

Cell lines

Human lung adenocarcinoma bronchioloalveolar carcinoma A549 cells and cisplatin (DDP) resistant A549 cells (A549^{DDP}) were obtained from the American Type Culture Collection (Manassas, VA) and cultured at 37°C in a humidified atmosphere containing 5% CO₂ in RPMI 1640 complete medium supplemented with sodium bicarbonate (2.2%, w/v), L-glutamine (0.03%, w/v), penicillin (100 units/ml), streptomycin (100 µg/ml), and fetal calf serum (10%).

Reagents

Akt (Ab-⁴⁷³) antibody (E021054-2), ERK1/2 (Ab-^{202/204}) Antibody (E022017-2), ERK1/2 (Phospho-Thr^{202/Tyr204}) Antibody (E012017-2), Akt (Phospho-Ser⁴⁷³) Antibody (E011054-2) and β-actin Antibody(5B7) (E12-041-3) were purchased from EnoGene, Shanghai, China. Clusterin (A-9)(sc-166907,1:200) was purchased from Santa Cruz, Shanghai, China. Horseradish peroxidase-conjugated goat anti-mouse and donkey anti-rabbit antibodies were obtained from Jackson ImmunoResearch (West Grove, PA). The enhanced chemiluminescence detection kit was from Amersham (Piscataway, NJ). Cisplatin (DDP) was purchased from Sigma (St. Louis, MO). Wortmannin [the inhibitor of phosphatidylinositol 3-kinase (PI3K)] (1670-1) was purchased from Biovision, Beijing, China. The MEK1/2 inhibitor U0126 [The inhibitor of Extracellular-signal Regulated Kinase (ERK)]. A stock solution of U0126 (10 mmol/L) was prepared using DMSO as the solvent.

Full-length human clusterin cDNA expression vectors

Reverse transcription-PCR of normal human fibroblast total RNA was done using the primers 5'-GACTCCAGAATTGGAGGCATG-3' (forward) and 5'-ATCTCACTCCTCCCGGTGCT-3' (reverse) [37]. The cDNA was cloned into pCRTM II (INVITROGEN). CLU full-length cDNA was then subcloned into the pCDNA3.1. to produce the pCDNA3.1-sCLU vector. Constructs have been sequenced before carrying out expression experiments.

pCDNA3.1-sCLU transfections

Total of 5×10⁵ A549 cells were plated in 6-cm dishes and transfected using the Lipofectamine 2000 (Invitrogen), according to the manufacturer's protocol. A549 cells were transfected with endotoxin-free preparations of pCDNA3.1-sCLU or pCDNA3.1 (control). Transiently transfected cells were harvested 48 h after transfection. Transfection efficiency was assessed by detection of Green Fluorescence Protein (GFP) expression by fluorescence microscopy. Positively transfected cells were routinely more than 50% of the cell population. For selection of stably transfected cell populations, G418 was added to the culture medium 48 h after transfection at a concentration of 400 µg ml⁻¹ for A549 cells. The cells were selected with 400 µg/mL G418 for 14 d. Selected colonies were screened by immunoblotting to identify stable clones expressing sCLU.

Short hairpin RNA transfection

Vector expressing short hairpin RNA against sCLU RNA (sCLU-shRNA) plasmid and control scrambled plasmid were purchased from Santa Cruz (Shanghai, China). A549^{DDP} cells were transfected with sCLU-shRNA or control scrambled using the Lipofectamine 2000 according to the manufacturer's protocol. G418 was added to the culture medium 48 h after transfection at a concentration of 600 µg ml⁻¹ for A549 cells. The cells were selected with 600 µg/mL G418 for 14 d to acquire the stably transfected A549^{DDP}/sCLU-shRNA. The knockdown effect was verified by Western Blotting analysis using anti-sCLU antibodies.

Drug treatments

Cisplatin was purchased from Sigma-Aldrich Co. Dimethyl sulfoxide was used to dilute cisplatin to a 20 mM stock. A549, A549^{DDP}, A549/pCDNA3.1-sCLU, A549^{DDP}/sCLU-shRNA, A549/pCDNA3.1 and A549^{DDP}/pCDNA3.1 cells were treated with cisplatin (1-50 µM) for 72 h or with the same concentration of cisplatin for the same duration followed by wortmannin (400 nM) for 4 h or U0126 (25 µM) for 8 h in the continuous presence of cisplatin. The concentration and duration of cisplatin treatment were chosen based on preliminary studies examining its effects on cell growth inhibition and induction of apoptosis.

Western blot analysis

For Western blot analysis, cells or xenograft tissues were rinsed in ice-cold PBS twice and lysed in cell lysis buffer (10 mM Tris-HCl, pH 7.4, 150 mM NaCl, 1% sodium deoxycholate, 1% Nonidet P-40, 1 µg/ml aprotinin, 1 µg/ml leupeptin, 50 mM NaF, 2 mM Na₃VO₄, 2 mM EGTA, 2 mM EDTA, and 0.25 mM PMSF) for 30 min. Samples were sonicated for 30 s and centrifuged for 20 min at 12,000 × g at 4°C. Samples were electrophoresed on a 12% SDS-polyacrylamide gel and electrophoretically blotted on nitrocellulose membrane. Membranes were blocked in TBS/Tween-20 with 5% milk and incubated with primary Abs diluted in TBS/Tween-20/BSA overnight at 4°C. The following primary antibodies were used: (β-actin: 1 : 10000; sCLU, Akt

(Ab-⁴⁷³), ERK1/2 (Ab-^{202/204}), ERK1/2 (Phospho-Thr202/Tyr204) and Akt (Phospho-Ser473). All blots were incubated with secondary Abs conjugated to HRP (1/2000) and developed using the ECL method. Protein concentration was determined using bicinchoninic acid assay (Pierce, Rockford, IL).

Cell viability assay

Cell viability was evaluated using cell counting kit (CKK-8). Briefly, A549, A549^{DDP}, A549/pCDNA3.1-sCLU, A549^{DDP}/sCLU-shRNA, A549/pCDNA3.1 and A549^{DDP}/pCDNA3.1 cells were pre-cultured in 96-well plate (3,000 cells/well) for 24 h. Seventy two hours after DDP treatment at the indicated doses, culture media were replaced by the WST-8 reagent. Reduced WST-8 by the cellular dehydrogenases turns into orange formazan. Produced formazan is directly proportional to living cells. Absorbance was measured at 450 nm by microplate reader equipped by computer.

Determination of apoptotic cells by FACS analysis

Quantification of apoptosis analysis was carried out as the manufacture's instruction. In brief, following treatment, the cells were collected by gentle trypsinisation, washed in phosphate-buffered saline (PBS) and

pelleted by centrifugation. The cells were fixed in 70% ethanol, washed twice in PBS and resuspended in PBS containing RNase A (20 mg ml⁻¹). The cells were stained with PI (final concentration 0.1 mg ml⁻¹) for 10 min at room temperature. The samples underwent FACS analysis (FL-3 channel) using a Beckman Coulter Counter Epics XL flow cytometer. For each sample, 10,000 events were collected and stored for subsequent analysis using EXPO software. Data were elaborated using Autofit feature of the Multicycle for Windows software and expressed as fraction of cells in the different cycle phases. The percentage of cells in the sub-G0 phase was quantitated as an estimate of cells undergoing apoptosis.

Terminal dUTP nick-end labeling (TUNEL) assay

Fixed cells were incubated with an equilibrium buffer for 5 min using the in situ apoptosis detection kit. Apoptosis of the cells was evaluated on the basis of the TUNEL assay according to the manufacturer's instructions. For quantifying apoptotic cells, apoptotic and total cells were counted in 5 random fields scoring between 300 and 500 cells, and the numbers of apoptotic cells were expressed as percentages of the total cell population. TUNEL staining slides were observed with microscope. All assays were performed in quadruplicate.

Statistical analysis

Student's *t*-test was used to compare mean values where appropriate using SPSS11.0 software. *P* values <0.05 were considered significant. All data are expressed as means ± SD for a series of experiments.

Results

sCLU was overexpressed in DDP resistant A549 cells (A549^{DDP})

As shown in Figure 1A, sCLU protein was overexpressed in cisplatin resistant A549 cells (A549^{DDP}) (1.26 ± 0.21) compared to the A549 cells (0.12 ± 0.03) (*P*<0.05), (Figure 1A).

Successful overexpression of sCLU through pCDNA3.1-sCLU transfection in A549 cells

Fluorescence microscopy was used to detect the pCDNA3.1-

sCLU transfection efficiency in A549 cells. After 48 h transfection, the green staining of more than 75% of cells was confirmed in pCDNA3.1 transfected A549 cells (Figure 1B).

In the pCDNA3.1-sCLU clones, expression of exogenous clusterin was significantly higher compared to the endogenous clusterin levels in the controls (pCDNA3.1). As shown in Figure 1C, sCLU protein was overexpressed in pCDNA3.1-sCLU transfected A549 cells (1.06 ± 0.24) compared to the A549 cells (0.12 ± 0.03) and control pCDNA3.1 transfected A549 cells (0.14 ± 0.03) (*P*<0.05).

Efficient silencing of the sCLU expression in A549^{DDP} cells by using shRNA

A549^{DDP} cells were stably transfected with scrambled control or shRNA of sCLU. Protein expression was evaluated in whole-cell extracts from A549^{DDP} cells. Comparing to the scrambled control, sCLU knockdown was shown to be successful across the A549^{DDP} cells (Figure 2). Furthermore, sCLU mRNA gene expression was also inhibited after stably shRNA of sCLU transfection (data not shown).

sCLU silencing inhibits DDP-induced growth in A549 cells

To characterize the role of sCLU in DDP resistance, A549 cells were stably transfected with control vector or sCLU-shRNA vector against sCLU to generate A549/shRNA or A549/sCLU-shRNA stable clone, respectively (Figure 2). The A549/shRNA or A549/sCLU-shRNA stable clones were treated with 1-50 μM cisplatin for 72 h. Cytotoxicity of DDP in control and sCLU knockdown cells were measured by MTT assays. As shown in Figure 3A, A549 cells depleted of sCLU displayed decreased cell survival after DDP treatment for 72 h, compared with those of control cells and control-shRNA transfected A549 cells. sCLU-shRNA or shRNA transfection alone did not affect the survival after DDP treatment (data not shown).

To examine whether depletion of sCLU can re-sensitize DDP resistant A549^{DDP} cells, A549^{DDP} was stably transfected with control or sCLU shRNA to establish control and sCLU knockdown cell lines (Figure 2). As shown in Figure 3B, depletion of sCLU in A549^{DDP} cells dramatically decreased the survival of DDP in sCLU knockdown cells measured by MTT assays.

sCLU overexpression confers resistance to DDP *in vitro* in A549 cells

To examine whether sCLU overexpression can be resistant to DDP treatment, A549 cells were stably transfected with pCDNA3.1 control or pCDNA3.1-sCLU to establish control and sCLU overexpressed A549 cells (Figure 1C). As shown in Figure 3C, overexpression of sCLU in A549 cells dramatically decreased cell survival of DDP in sCLU overexpressed cells measured by MTT assays. pCDNA3.1 control or pCDNA3.1-sCLU transfection alone did not affect the survival after DDP treatment (data not shown). The data presented above suggest that stable overexpression of clusterin or stable silencing of clusterin alone did not affect cell survival of the A549 cells, but sCLU confers DDP resistance.

sCLU silencing increases DDP-induced apoptosis in A549 cells

In addition to testing apoptosis levels of sCLU silencing on DDP induced apoptosis, the A549^{DDP} cells, sCLU-shRNA stably transfected A549 cells and their controls were chosen for study.

We first analyzed the sCLU alone on apoptosis in A549 cells. A549 cells were transiently transfected with sCLU-shRNA, and its controls

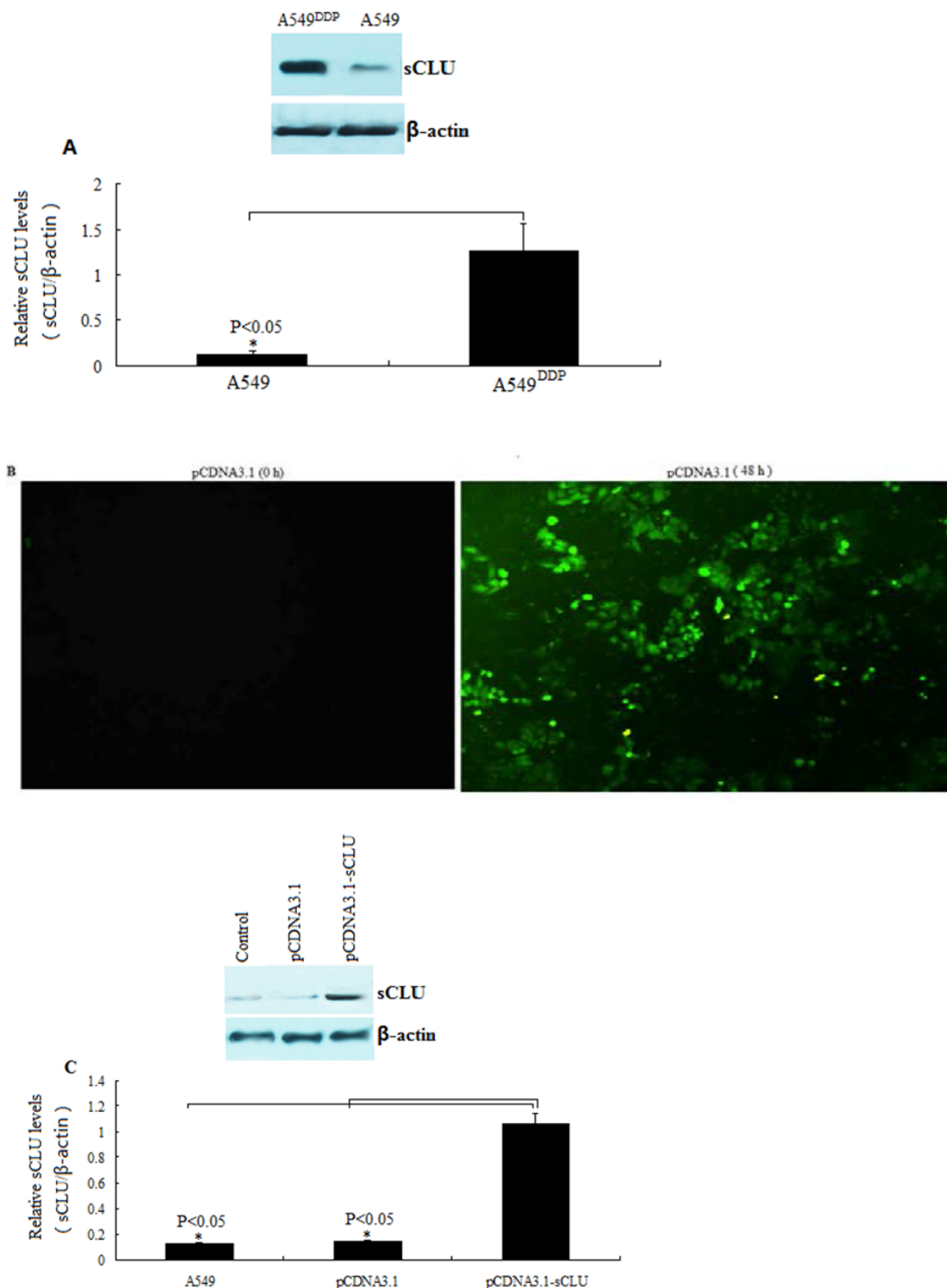


Figure 1: Effective sCLU expression in A549 cells after pCDNA3.1-sCLU transfection. **(A)** sCLU protein expression was detected in A549DDP cells by western blot assay. **(B)** Transfection efficiency shown by fluorescence microscopy. **(C)** sCLU protein expression was detected in pCDNA3.1-sCLU transfected A549 cells by western blot assay (* $P < 0.05$).

for 72 hours, no significant apoptotic cells was increased by TUNEL staining and FACS assay (data not shown).

To analyze the extent of the DDP-mediated cell death, we scored

apoptosis by TUNEL and FACS. A549^{DDP} cells were treated with 1-50 μ M cisplatin for 72 h, no significant TUNEL positive cells were shown. To observe whether depletion of sCLU can re-sensitize DDP resistant

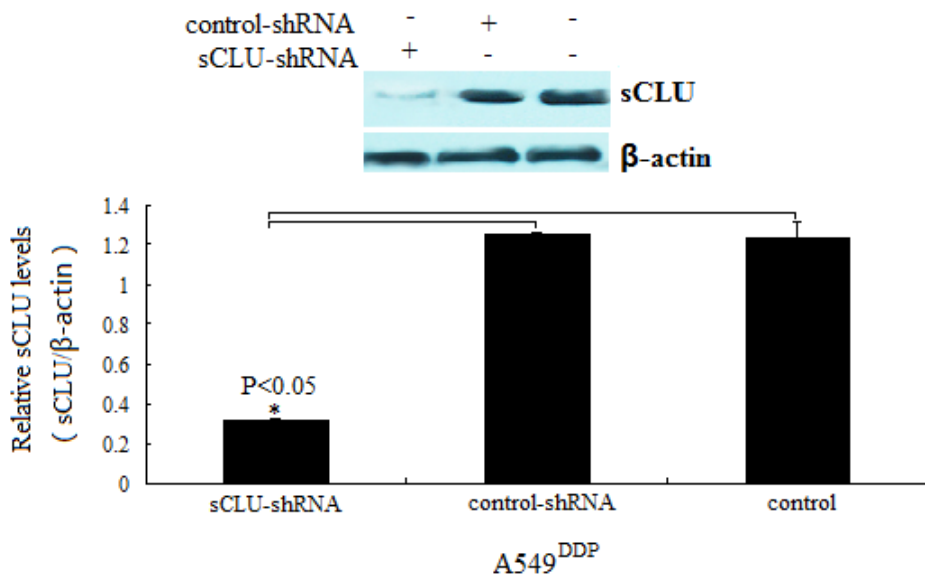


Figure 2: Effective silencing of the sCLU expression in A549^{DDP} cells after shRNA transfection. sCLU expression was knocked down by western blot assay after stably shRNA of sCLU transfection (* $P < 0.05$).

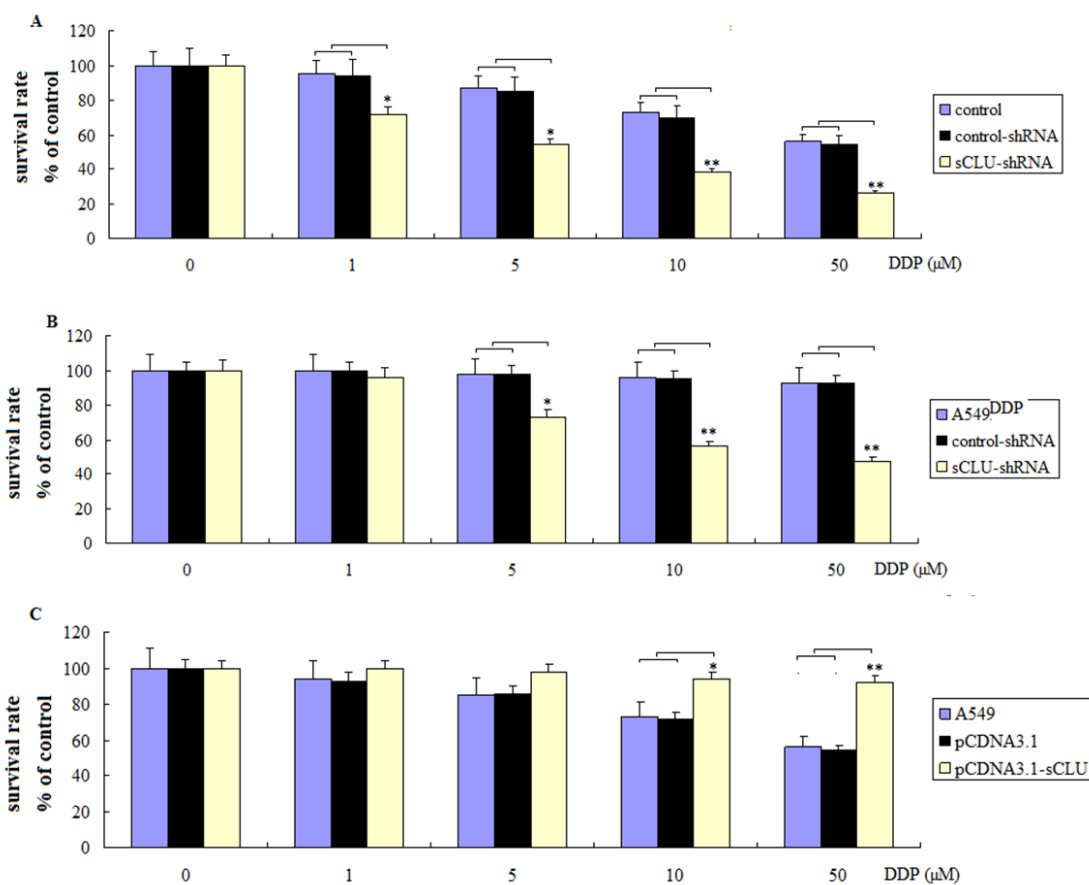


Figure 3: sCLU level is associated with DDP sensitivity in A549 cells. **(A)** A549/shRNA or A549/sCLU-shRNA stable clone were seeded into 96-well plates. The following day, 1-50 μ M cisplatin were applied. After incubation for 72 hours, cell survival was analyzed by MTT. Cell growth in the absence of DDP corresponds to 100. **(B)** A549^{DDP} was stably transfected with control or sCLU shRNA, then treated with 1-50 μ M cisplatin for 72 h. MTT assays were performed the cell survival. **(C)** A549 cells was stably transfected with pCDNA3.1 control or pCDNA3.1-sCLU, then treated with 1-50 μ M cisplatin for 72 h. MTT assays were performed the cell survival. Boxes, mean; bars, \pm SD. * $P < 0.05$, ** $P < 0.01$ (compared with control or cells transfected with mock expression plasmid).

A549^{DDP} cells, A549^{DDP} was stably transfected with control or sCLU shRNA to establish control and sCLU knockdown cell lines (Figure 2). The results showed depletion of sCLU in A549^{DDP} cells dramatically increased TUNEL positive cells in the A549^{DDP}/sCLU shRNA cells (Figure 4A). Similar results were also shown by FACS assay (data not shown).

A549 cells treated with 1-50 μ M cisplatin for 72 h induced a few apoptotic cells, however, in the sCLU-shRNA stably transfected A549 cells, treated with 1-50 μ M cisplatin for 72 h induced much more TUNEL positive cells (Figure 4B). Similar results were also shown by FACS assay (data not shown). These results above are consistent with cell growth inhibition studies by MTT, suggesting that the loss of viable cells by sCLU-shRNA transfection is partly due to the induction of an apoptotic cell death mechanism.

Cisplatin activates sCLU and sCLU-dependent ERK1/2 and AKT phosphorylation in A549 cells

A549 cells were treated with cisplatin (DDP) (1-50 μ M) for 72 times. Protein expression was evaluated in whole-cell extracts from A549 cells by Western blotting. As shown in Figure 5A, sCLU, pERK1/2 and pAKT protein expression was elevated in A549 cells after 1,5,10 and 50 μ M cisplatin treatment for 72 h.

To determine if pERK1/2 and pAKT protein expression was sCLU dependent, A549 cells were stably transfected with control vector or sCLU-shRNA vector against sCLU, then treated with 1-50 μ M cisplatin for 72 h. Western blot result shown no statistical sCLU, pERK1/2 and pAKT protein expression upregulation was found in sCLU-shRNA vector transfected cells compared to the cells treated with DDP alone

(Figure 5B) or control vector transfected cells treated with DDP (data not shown).

When the A549 cells were treated with wortmannin (400 nM) for 4 h or U 0126 (25 μ M) for 8 h, then treated with 1,5,10 and 50 μ M cisplatin for 72 h, pERK1/2 and pAKT protein expression was inhibited, however, sCLU was activated in the continuous presence of cisplatin all the same (data not shown). These results demonstrate that cisplatin activates sCLU-dependent pERK1/2 and pAKT expression in A549 cells.

sCLU silencing sensitizes A549 cells to DDP via inactivation of ERK1/2 and AKT phosphorylation

To determine the biological significance of the functional link between clusterin and AKT and ERK, we have evaluated the effects of sCLU knockdown DDP induced A549 cell death. As shown in Figure 6A, A549^{DDP} has higher sCLU levels, the phosphorylated ERK1/2 and AKT was also activated in the A549^{DDP} cells. In sCLU-shRNA stably transfected A549^{DDP} cells, the sCLU, pERK1/2 and pAKT was specifically silenced. In contrast, inhibition of phosphorylated ERK1/2 and AKT by wortmannin or/and U 0126 did not affect sCLU levels in the A549^{DDP} cells, suggesting that ERK1/2 and AKT is a critical downstream mediator of sCLU.

It has shown above that A549^{DDP} cells depleted of sCLU displayed decreased cell survival and increased apoptotic cells after DDP treatment for 72 hs, compared with those of control cells and control-shRNA transfected A549 cells.

We then investigated if concurrent blockage of pERK1/2 and pAkt cooperatively potentiates DDP (5 μ M)-induced cancer A549^{DDP}

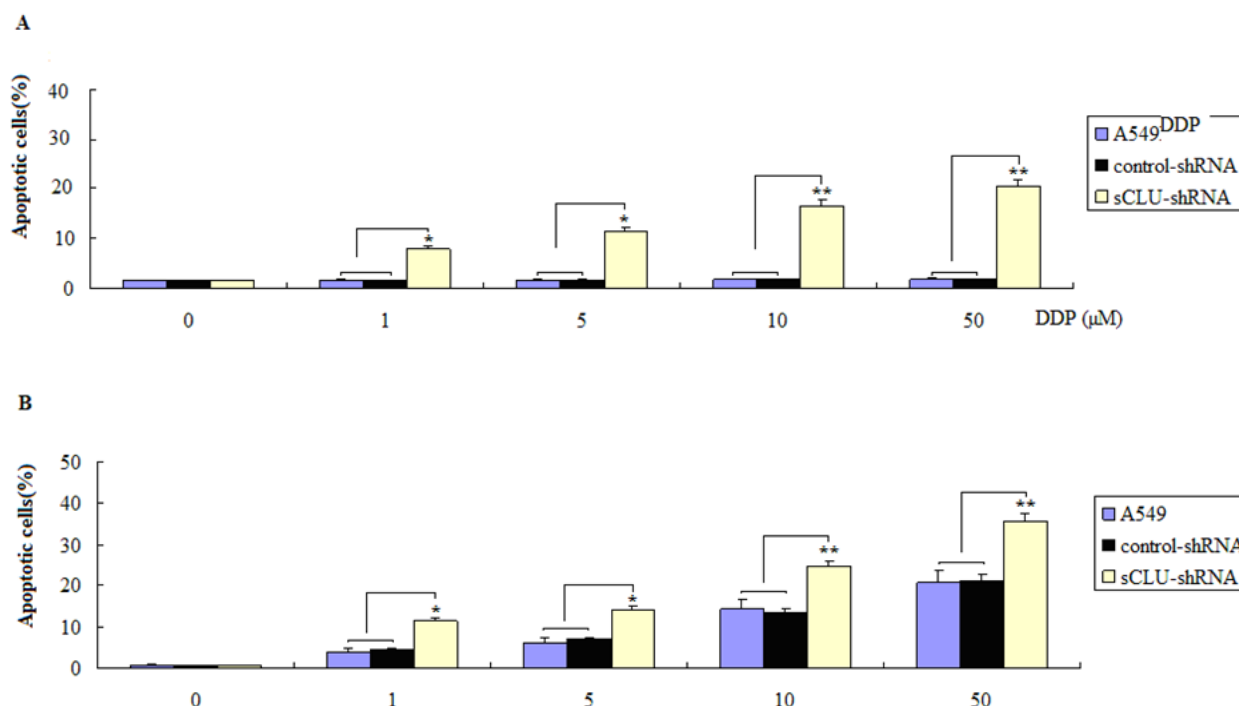
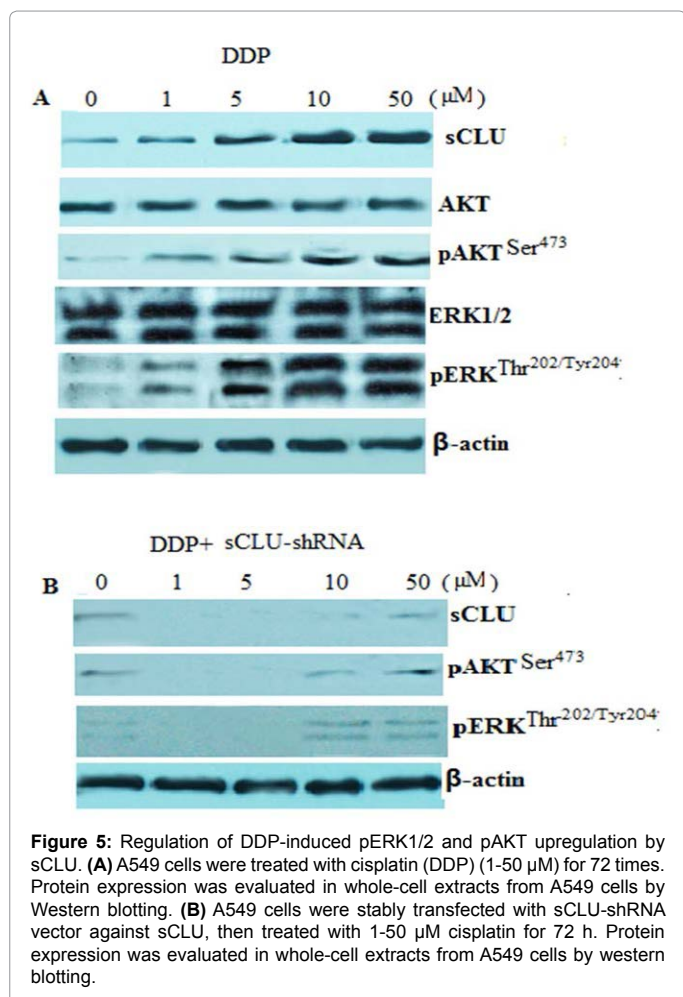


Figure 4: sCLU silencing on DDP-induced apoptosis in A549 cells. **(A)** A549^{DDP} cells, A549^{DDP} cells stably transfected with control or sCLU were treated with 1-50 μ M cisplatin for 72 h. Apoptosis was analyzed by TUNEL analysis. **(B)** A549 cells, A549 cells stably transfected with control or sCLU-shRNA were treated with 1-50 μ M cisplatin for 72 h. Apoptosis was analyzed by TUNEL analysis. Boxes, mean; bars, \pm SD. * P <0.05, ** P <0.01 (compared with control or cells transfected with mock expression plasmid).



cells death and survival inhibition. A549^{DDP} cells were treated with wortmannin or U0126 alone or combined wortmannin and U0126 to simultaneously block pAkt and pERK1/2 and examined the effect of which on DDP-induced cancer cell apoptosis and survival inhibition.

Treatment with DDP caused no detectable apoptotic cells in the A549^{DDP} cells. When treatment with DDP and wortmannin, 8.9% of the apoptosis cells was detected ($P < 0.05$), when combined with U0126, 9.4% of the apoptosis cells was detected ($P < 0.05$), however, when cells were treated with DDP and in combination with wortmannin and U0126, a synergistic cytotoxicity that 19.6% of the apoptosis cells was detected ($P < 0.01$) (Figures 6B and 6C). This potentiated cytotoxicity by double pathway blockage is much higher than that of individual blockage of either pERK1/2 or pAKT. Similar results were also shown in the cellular viability inhibition (data not shown).

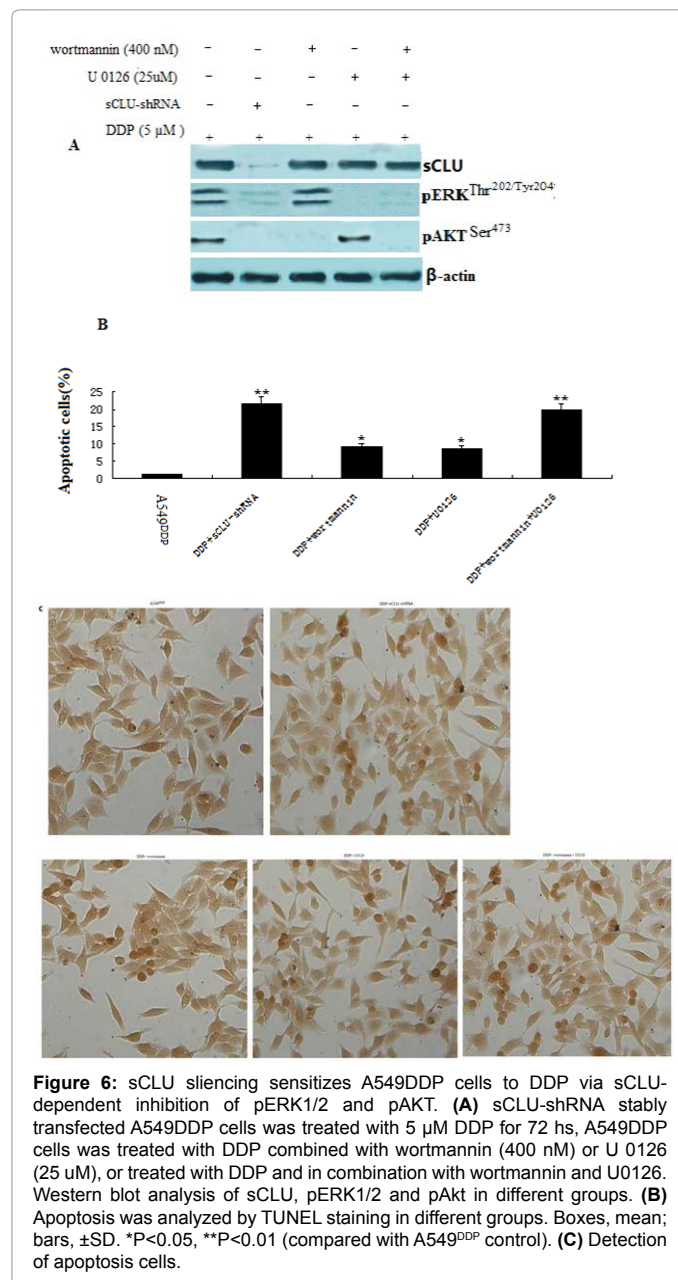
Discussion

This development of cisplatin resistance is a complex phenomenon involving multiple alterations. It can be intrinsic owing to germline genetic variation or acquired through altered mRNA or protein expression in key pharmacokinetic or pharmacodynamic pathways. It can also be the reduction of intracellular drug accumulation, increased DNA damage repair, and up-regulation of antiapoptotic genes [6,38]. Moreover, activation of survival-associated signal transduction pathways influences the cellular response to cisplatin treatment [39]. The crucial point in these events may be determined by signaling events

downstream of the drug-DNA interactions. Acquisition of resistance by tumor cells to anticancer drugs may involve modifications in the cells ability to trigger downstream signaling events. It is thus the balance between the various proteins present in the cell that finally decides whether the cell should live or die.

Recent focus has turned to Clusterin (CLU) as a key contributor to chemoresistance to anticancer agents. Its role has been documented in prostate cancer for paclitaxel/docetaxel resistance [40] as well as in renal [41], and melanoma [42], breast tumor cells [9,43]. Most significantly, sCLU expression is documented to lead to broad-based resistance to other unrelated chemotherapeutic agents such as doxorubicin [9,44], cisplatin [9,44,45], and etoposide [46].

In the present study, we found cisplatin treatment increased the levels of sCLU in the A549 cells which made the A549 cells acquire the resistance to cisplatin. Overexpression of sCLU by sCLU transfection



protected human lung cancer cells from cisplatin-induced cytotoxicity. In addition, inhibition of sCLU by shRNA to sCLU transfection could restore cisplatin sensitivity in cisplatin sensitive and resistant A549^{DDP} cells. Although the involvement of sCLU acquires resistance to cisplatin in A549 cells, however, the molecular mechanisms underlying the effect of sCLU on lung cancer cell chemosensitivity is not known.

ERK1/2 activation results in the phosphorylation of many intracellular proteins that regulate various cellular functions ranging from proliferation and differentiation to apoptosis [47,48]. Cisplatin can activate ERK1/2 in various cell types. Some studies have shown that activation of ERK1/2 is associated with an increase in cell survival in cisplatin-treated cells [49,50]. Accumulating evidence has indicated that the acquisition of resistance to chemotherapeutic drugs also involves the activation of the PI3K/Akt pathway [51]. Combining PI3K/Akt inhibitors with standard chemotherapy has been successful in increasing the efficacy of chemotherapeutic agents both *in vivo* and *in vitro* [52,53].

Our previous studies have reported [33] that cisplatin activate both p-ERK1/2 and p-Akt in A549 cells. Blockade of either of these pathways with chemical inhibitors moderately sensitized A549 cells to cisplatin induced apoptosis and reduced cell viability. Strikingly, much more effective potentiation of cytotoxicity to cisplatin was achieved when p-ERK1/2 and p-Akt were concurrently blocked *in vitro* and *in vivo*. Our study demonstrated that cisplatin-induced ERK1/2 and AKT activation participates in protection from cisplatin-mediated cytotoxic effect in A549 cells.

PI3K/Akt and ERK1/2 is believed to act downstream of sCLU [16,17,34-36]. In this study, cisplatin could up-regulate the expression of sCLU, which is correlated with the activation of pAKT and pERK1/2. When p-ERK1/2 and p-Akt protein was prevented by U0126, a MKK1/2 inhibitor, and wortmannin an inhibitor of phosphatidylinositol 3-kinase (PI3K), cisplatin could not induce p-ERK1/2 and p-Akt upregulation, though sCLU was induced by cisplatin. In the cisplatin resistant A549^{DDP} cells and sCLU stably transfected A549 cells, p-ERK1/2 and p-Akt was also activated. However, when sCLU was inhibited by shRNA transfection, p-ERK1/2 and p-Akt was inhibited. Therefore, we suggest that p-ERK1/2 and p-Akt was regulated by sCLU.

In the DDP resistant A549^{DDP} cells and sCLU stably transfected A549 cells, high sCLU expression level was found. Silencing of sCLU expression can re-sensitize the two cells to cisplatin. In addition, inhibition of p-ERK1/2 or p-Akt alone could in part sensitize the two cells to cisplatin, however, when p-ERK1/2 and p-Akt were concurrently blocked, significant recovery in chemosensitivity to DDP in A549^{DDP} and sCLU stably transfected A549 cells. Therefore, we suggest that sCLU protects lung cancer cells from cisplatin-induced cytotoxicity, which might be by activation of ERK1/2 and Akt.

Taken together, activation of sCLU may contribute to cisplatin resistance. Our results identify a new mechanism showing that the sCLU-AKT and sCLU-ERK1/2 signaling pathway is responsible for cisplatin resistance and suggest that targeting the sCLU-AKT and sCLU-ERK1/2 signaling pathway may overcome cisplatin resistance in human lung cancer.

References

1. Spira A, Ettinger DS (2004) Multidisciplinary management of lung cancer. *N Engl J Med* 350: 379-392.
2. Neal JW, Gubens MA, Wakelee HA (2011) Current management of small cell lung cancer. *Clin Chest Med* 32: 853-863.
3. Chang A (2011) Chemotherapy, chemoresistance and the changing treatment landscape for NSCLC. *Lung Cancer* 71: 3-10.
4. Kartalou M, Essigmann JM (2001) Mechanisms of resistance to cisplatin. *Mutat Res* 478: 23-43.
5. Rabik CA, Dolan ME (2007) Molecular mechanisms of resistance and toxicity associated with platinating agents. *Cancer Treat Rev* 33: 9-23.
6. Siddik ZH (2003) Cisplatin: mode of cytotoxic action and molecular basis of resistance. *Oncogene* 22: 7265-7279.
7. Rosenberg ME, Silnkens J (1995) Clusterin: physiologic and pathophysiologic considerations. *Int J Biochem Cell Biol* 27: 633-645.
8. Jones SE, Jomary C (2002) Clusterin. *Int J Biochem Cell Biol* 34: 427-431.
9. Niu ZH, Wang Y, Chun B, Li CX, Wu L (2013) Secretory clusterin (sCLU) overexpression is associated with resistance to preoperative neoadjuvant chemotherapy in primary breast cancer. *Eur Rev Med Pharmacol Sci* 17: 1337-1344.
10. Zoubeydi A, Chi K, Gleave M (2010) Targeting the cytoprotective chaperone, clusterin, for treatment of advanced cancer. *Clin Cancer Res* 16: 1088-1093.
11. Yang GF, Li XM, Xie D (2009) Overexpression of clusterin in ovarian cancer is correlated with impaired survival. *Int J Gynecol Cancer* 19: 1342-1346.
12. He LR, Liu MZ, Li BK, Rao HL, Liao YJ, et al. (2009) Clusterin as a predictor for chemoradiotherapy sensitivity and patient survival in esophageal squamous cell carcinoma. *Cancer Sci* 100: 2354-2360.
13. Xie MJ, Motoo Y, Su SB, Mouri H, Ohtsubo K, et al. (2002) Expression of clusterin in human pancreatic cancer. *Pancreas* 25: 234-238.
14. Park DC, Yeo SG, Wilson MR, Yerbury JJ, Kwong J, et al. (2008) Clusterin interacts with Paclitaxel and confer Paclitaxel resistance in ovarian cancer. *Neoplasia* 10: 964-972.
15. Wang Y, Wang X, Zhao H, Liang B, Du Q (2012) Clusterin confers resistance to TNF-alpha-induced apoptosis in breast cancer cells through NF-kappaB activation and Bcl-2 overexpression. *J Chemother* 24: 348-357.
16. Chou TY, Chen WC, Lee AC, Hung SM, Shih NY, et al. (2009) Clusterin silencing in human lung adenocarcinoma cells induces a mesenchymal-to-epithelial transition through modulating the ERK/Slug pathway. *Cell Signal* 21: 704-711.
17. Yan Y, Luo K, Zhang H, Chai W (2013) RNA interference-mediated secretory clusterin gene silencing inhibits proliferation and promotes apoptosis of human non-small cell lung cancer cells. *Hepatogastroenterology* 60:70-75.
18. Cheng CY, Chengn SH, Wu WJ, Yang TY, Huang XY, et al. (2012) Regulation of chemosensitivity and migration by clusterin in non-small cell lung cancer cells. *Cancer Chemother Pharmacol* 69: 145-154.
19. Laskin JJ, Nicholas G, Lee C, Gittitz B, Vincent M, et al. (2012) Phase I/II trial of laskinsten (OGX-011), an inhibitor of clusterin, in combination with a gemcitabine and platinum regimen in patients with previously untreated advanced non-small cell lung cancer. *J Thorac Oncol* 7: 579-586.
20. Cao C, Shinohara ET, Li H, Niermann KJ, Kim KW, et al. (2005) Clusterin as a therapeutic target for radiation sensitization in a lung cancer model. *Int J Radiat Oncol Biol Phys* 63: 1228-1236.
21. Kapoor S (2013) Clusterin inhibition to enhance tumor chemosensitivity in systemic tumors. *Cancer Chemother Pharmacol* 71: 1101.
22. Bortol R, Tazzari PL, Billi AM, Tabellini G, Mantovani I, et al. (2005) Deguelin, A PI3K/AKT inhibitor, enhances chemosensitivity of leukaemia cells with an active PI3K/AKT pathway. *Br J Haematol* 129: 677-686.
23. Liu D, Zhang Y, Dang C, Ma Q, Lee W, et al. (2007) siRNA directed against TrkA sensitizes human pancreatic cancer cells to apoptosis induced by gemcitabine through an inactivation of PI3K/Akt-dependent pathway. *Oncol Rep* 18: 673-677.
24. Guinea Vinięra J, Hernández Losa J, Sánchez-Arévalo VJ, Parada Cobo C, Fernández Soria VM, et al. (2002) Modulation of PI3K/Akt pathway by E1a mediates sensitivity to cisplatin. *Oncogene* 21: 7131-7136.
25. McCubrey JA, Steelman LS, Abrams SL, Lee JT, Chang F, et al. (2006) Roles of the RAF/MEK/ERK and PI3K/PTEN/AKT pathways in malignant transformation and drug resistance. *Adv Enzyme Regul* 46: 249-279.
26. McCubrey JA, Steelman LS, Chappell WH, Abrams SL, Wong EW, et al. (2007)

- Roles of the Raf/MEK/ERK pathway in cell growth, malignant transformation and drug resistance. *Biochim Biophys Acta* 1773: 1263-1284.
27. Sridhar SS, Hedley D, Siu LL (2005) Raf kinase as a target for anticancer therapeutics. *Mol Cancer Ther* 4: 677-685.
 28. Tang Y, Liu F, Zheng C, Sun S, Jiang Y (2012) Knockdown of clusterin sensitizes pancreatic cancer cells to gemcitabine chemotherapy by ERK1/2 inactivation. *J Exp Clin Cancer Res* 31: 73.
 29. Si H, Peng C, Li J, Wang X, Zhai L, et al. (2012) RNAi-mediated knockdown of ERK1/2 inhibits cell proliferation and invasion and increases chemosensitivity to cisplatin in human osteosarcoma U2-OS cells in vitro. *Int J Oncol* 40: 1291-1297.
 30. Zhou L, Luan H, Liu Q, Jiang T, Liang H, et al. (2012) Activation of PI3K/Akt and ERK signaling pathways antagonized sinomenine-induced lung cancer cell apoptosis. *Mol Med Rep* 5: 1256-1260.
 31. Li H, Schmid-Bindert G, Wang D, Zhao Y, Yang X, et al. (2011) Blocking the PI3K/AKT and MEK/ERK signaling pathways can overcome gefitinib-resistance in non-small cell lung cancer cell lines. *Adv Med Sci* 56: 275-284.
 32. Lee HY, Oh SH, Suh YA, Baek JH, Papadimitrakopoulou V, et al. (2005) Response of non-small cell lung cancer cells to the inhibitors of phosphatidylinositol 3-kinase/Akt- and MAPK kinase 4/c-Jun NH2-terminal kinase pathways: an effective therapeutic strategy for lung cancer. *Clin Cancer Res* 11: 6065-6074.
 33. Wang M, Liu ZM, Li XC, Yao YT, Yin ZX (2013) Activation of ERK1/2 and Akt is associated with cisplatin resistance in human lung cancer cells. *J Chemother* 25: 162-169.
 34. Li J, Jia L, Zhao P, Jiang Y, Zhong S, et al. (2012) Stable knockdown of clusterin by vectorbased RNA interference in a human breast cancer cell line inhibits tumour cell invasion and metastasis. *J Int Med Res* 40: 545-555.
 35. Xiu P, Dong X, Dong X, Xu Z, Zhu H, et al. (2013) Secretory clusterin contributes to oxaliplatin resistance by activating Akt pathway in hepatocellular carcinoma. *Cancer Sci* 104: 375-382.
 36. Ma X, Bai Y (2012) IGF-1 activates the P13K/AKT signaling pathway via upregulation of secretory clusterin. *Mol Med Rep* 6: 1433-1437.
 37. Scaltriti M, Bettuzzi S, Sharrard RM, Caporali A, Caccamo AE, et al. (2004) Clusterin overexpression in both malignant and nonmalignant prostate epithelial cells induces cell cycle arrest and apoptosis. *Br J Cancer* 91: 1842-1850.
 38. Manic S, Gatti L, Carenini N, Fumagalli G, Zunino F, et al. (2003) Mechanisms controlling sensitivity to platinum complexes: role of p53 and DNA mismatch repair. *Curr Cancer Drug Targets* 3: 21-29.
 39. Hanahan D, Weinberg RA (2000) The hallmarks of cancer. *Cell* 100: 57-70.
 40. Springate CM, Jackson JK, Gleave ME, Burt HM (2005) Efficacy of an intratumoral controlled release formulation of clusterin antisense oligonucleotide complexed with chitosan containing paclitaxel or docetaxel in prostate cancer xenograft models. *Cancer Chemother Pharmacol* 56: 239-247.
 41. Miyake H, Hara S, Zellweger T, Kamidono S, Gleave ME, et al. (2001) Acquisition of resistance to Fas-mediated apoptosis by overexpression of clusterin in human renal-cell carcinoma cells. *Mol Urol* 5: 105-111.
 42. Hoeller C, Pratscher B, Thallinger C, Winter D, Fink D, et al. (2005) Clusterin regulates drug-resistance in melanoma cells. *J Invest Dermatol* 124: 1300-1307.
 43. Redondo M, Téllez T, Roldan MJ, Serrano A, García-Aranda M, et al. (2007) Anticlusterin treatment of breast cancer cells increases the sensitivities of chemotherapy and tamoxifen and counteracts the inhibitory action of dexamethasone on chemotherapy-induced cytotoxicity. *Breast Cancer Res* 9: R86.
 44. Lourda M, Trougakos IP, Gonos ES (2007) Development of resistance to chemotherapeutic drugs in human osteosarcoma cell lines largely depends on up-regulation of Clusterin/Apolipoprotein J. *Int J Cancer* 120: 611-622.
 45. Karaca B, Atmaca H, Bozkurt E, Kisim A, Uzunoglu S, et al. (2013) Combination of AT-101/cisplatin overcomes chemoresistance by inducing apoptosis and modulating epigenetics in human ovarian cancer cells. *Mol Biol Rep* 40: 3925-3933.
 46. Pajak B, Orzechowski A (2007) Ethylenediaminetetraacetic acid affects subcellular expression of clusterin protein in human colon adenocarcinoma COLO 205 cell line. *Anticancer Drugs* 18: 55-63.
 47. Peyssonnaud C, Eychène A (2001) The Raf/MEK/ERK pathway: new concepts of activation. *Biol Cell* 93: 53-62.
 48. Zhuang S, Schnellmann RG (2006) A death-promoting role for extracellular signal-regulated kinase. *J Pharmacol Exp Ther* 319: 991-997.
 49. Ko JC, Tsai MS, Chiu YF, Weng SH, Kuo YH, et al. (2011) Up-regulation of extracellular signal-regulated kinase 1/2-dependent thymidylate synthase and thymidine phosphorylase contributes to cisplatin resistance in human non-small-cell lung cancer cells. *J Pharmacol Exp Ther* 338: 184-194.
 50. Gozdz A, Habas A, Jaworski J, Zielinska M, Albrecht J, et al. (2003) Role of N-methyl-D-aspartate receptors in the neuroprotective activation of extracellular signal-regulated kinase 1/2 by cisplatin. *J Biol Chem* 278: 43663-43671.
 51. Huang WC, Hung MC (2009) Induction of Akt activity by chemotherapy confers acquired resistance. *J Formos Med Assoc* 108: 180-194.
 52. Seo JH, Jeong ES, Lee KS, Heo SH, Jeong DG, et al. (2013) Lentivirus-mediated shRNA targeting of cyclin D1 enhances the chemosensitivity of human gastric cancer to 5-fluorouracil. *Int J Oncol* 43: 2007-2014.
 53. Heavey S, O'Byrne KJ, Gately K (2014) Strategies for co-targeting the PI3K/AKT/mTOR pathway in NSCLC. *Cancer Treat Rev* 40: 445-456.