

# Journal of Community Medicine & Health Education

ISSN: 2161-0711



[www.omicsonline.org](http://www.omicsonline.org)



Community Medicine is a branch of medicine that is concerned with the health of the members of a community or region. The emphasis in community medicine is on the early diagnosis of disease, the recognition of environmental and occupational hazards to good health and the prevention of disease in the community.



Journal of Community Medicine & Health Education under Open Access category aims to demonstrate. Journal of Community Medicine & Health Education an international, peer-reviewed journal publishing an overview of human research on substance abuse which includes the contents geared towards behavioral, psychological, genetic, neuro-biological and pharmacological aspects.



Journal of Community Medicine & Health Education explicates the complicated aspects of addiction, psychological and most probably physical addiction despite of its detrimental consequences and increased tolerance, as deemed by the drug addict himself to his individual health, mental state and unmanageable life style. Journal is promptly available, and is freely accessible globally through internet to share the innovations of the researchers for scholarly advancement in this field.

Journal of Community Medicine & Health Education - Open Access uses online manuscript submission, review and tracking systems for quality and quick review processing. Submit your manuscript at

<http://www.editorialmanager.com/medicallsciences/default.asp>

## Editors & Editorial Board



**Norman H Edelman**  
Stony Brook University, USA



**S Zakia Hossain**  
University of Sydney Australia



**Hans-Olov Adami**  
Harvard School Of Public Health, USA



**Diana Hernández**  
Columbia University USA



**Justine J Reel**  
University of Utah USA



**Jim Annesi**  
Rutgers University USA



**Ranjita Misra**  
Texas A&M University USA



**K Stephen Suh**  
Hackensack University Medical Center, USA



**Zaher Merhi**  
Montefiore Reproductive Center, USA



**Koyejo A Oyerinde**  
Columbia University USA



**C Sabanayagam**  
West Virginia University School of Medicine, USA



**Depeng Jiang**  
University of Manitoba Canada



**Shauna M Burke**  
University of Western Ontario, Canada



**Beverley Russell**  
Center for Community Health Education Research and Service USA



**Jim Parle**  
University of Birmingham, UK



**Mark Agius**  
Bedford East Community Mental Health Team, UK



**Seda Erdem**  
University of York UK



**Jerome Roncalli**  
Rangueil University Hospital, France



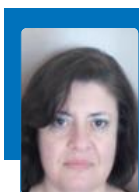
**M Omar Gaci**  
University of Le Havre France



**GA Androustopoulos**  
University of Patras Greece



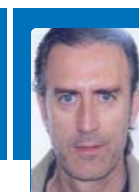
**Paraskevi Theofilou**  
Panteion University Greece



**Efstathia Pasmatzis**  
University of Patras Greece



**Dimitrios L Kalpaxis**  
University of Patras Greece



**JZ Casterad**  
University of Zaragoza Spain



**Norio Kagawa**  
Nagoya University School of Medicine Japan



**Ian Paul Everall**  
The University of Melbourne, Australia



**Lisa Bourke**  
The University of Melbourne, Australia



**Gomathi Sitharthan**  
University of Sydney Australia



**Leslie F Roberts**  
Columbia University USA



**Rajeev Jyoti**  
Australian National University, Australia



**Zan-Min Song**  
Australian National University, Australia



**C Mei-Sheung Chan**  
The Hong Kong Institute of Education Hong Kong



**R James Pepperell**  
Penang Medical College Malaysia



**CT Sreeramareddy**  
Melaka-Manipal Medical College Malaysia



**R A Al-Naggar**  
Management and Science University Malaysia



**William Wong**  
The University of Hong Kong, China

### OMICS Publishing Group

5716 Corsa Ave, Suite 110, Westlake, Los Angeles, CA 91362-7354, USA, Email: [editor.jcmhe@omicsonline.org](mailto:editor.jcmhe@omicsonline.org)  
Phone: +1-650-268-9744, Fax: +1-650-618-1414, Toll free: +1-800-216-6499



**Neeraj Gour**  
Peoples College of  
Medical Sciences &  
Research Centre  
India



**Sanjeev Kumar  
Gupta**  
Mahatma Gandhi  
Medical College  
& Research Institute  
India



**H Tukaram Pandve**  
Smt. Kashibai Navale  
Medical College  
India



**Haranatha R Pottei**  
University of Illinois  
USA

## **OMICS Publishing Group**

5716 Corsa Ave, Suite 110, Westlake, Los Angeles, CA 91362-7354, USA, Email: [editor.jcmhe@omicsonline.org](mailto:editor.jcmhe@omicsonline.org)  
Phone: +1-650-268-9744, Fax: +1-650-618-1414, Toll free: +1-800-216-6499