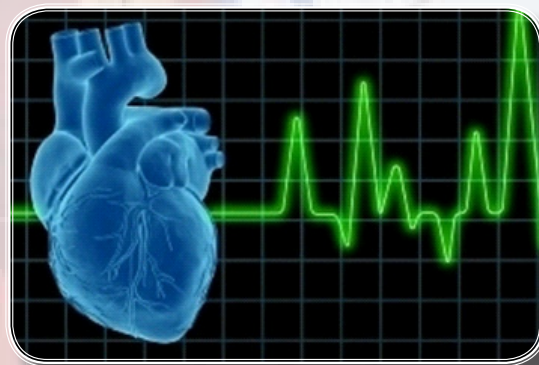
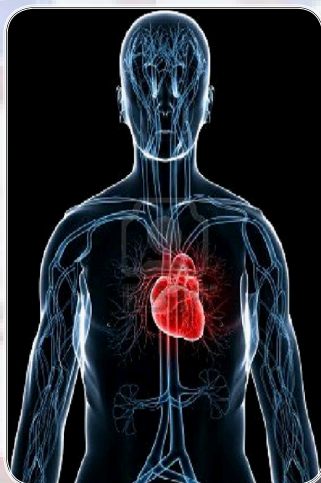
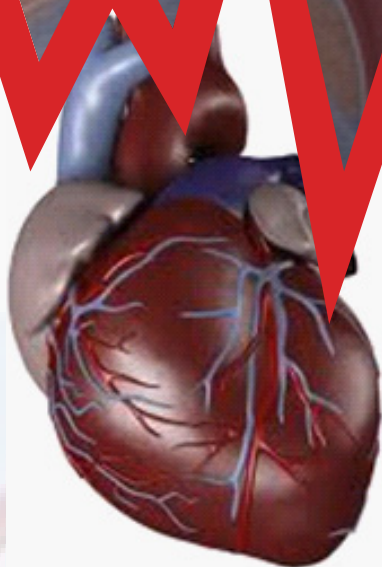




Journal of Clinical & Experimental Cardiology

Open Access

www.omicsonline.com



OMICS Publishing Group

5716 Corsa Ave., Suite 110, Westlake, Los Angeles, CA 91362-7354, USA, E-mail:

editor.jcec@omicsonline.com

Phone: +1- 650-268-9744, Fax: +1-650-618-1414, Toll free: +1-800-216-6499



Cardiology deals with the diagnosis and treatment of various disorders of heart and blood vessels. The Journal of Clinical and Experimental Cardiology explicates the comprehensive coverage of modern practice in cardiovascular therapy in order to resolve current problems in the clinical cardiology ensuring the major technological developments.



The Journal of Clinical and Experimental Cardiology is an international, peer-reviewed scientific journal publishes the experimental and clinical research in diagnostics, cardiovascular medicine, and treatment of cardiovascular diseases. The contents of the Journal of Clinical and Experimental Cardiology under Open Access Publication includes the coverage of advanced treatment strategies, diagnostic approaches and screening, new molecular approaches in advanced interventional and surgical approaches in treating cardiovascular diseases and the information provided in the journal is freely accessible through globally.



The Journal of Clinical and Experimental Cardiology publishes manuscripts of original research articles of reliable information covering the recent developments, controversial techniques, current strategies in treating heart diseases. The Journal of Clinical and Experimental Cardiology encompasses the novel ideas and advanced research methods, interpreting key research developments of cardiovascular disease specialists and researchers, also emphasizes the translation of their latest findings into clinical and experimental approaches. The Journal of Clinical and Experimental Cardiology provides a forum for the original and review articles explicating the perspectives of clinical research in cardiology and cardiovascular surgery.

Journal of Clinical & Experimental Cardiology - Open Access uses online manuscript submission, review and tracking systems for quality and quick review processing. Submit your manuscript at

<http://omicsgroup.org/editorialtracking/cardiology/SubmitManuscript.php>

Editors & Editorial Board



Alexandra Lucas
University of Florida
USA



Dayue Darrel Duan
University of Nevada
USA



P.A. McCullough
St. John Providence
Health System
USA



S Wamique Yusuf
University of Texas
USA



Mouaz H Al-Mallah
Medicine Wayne
State University, USA



Aamir Shahzad
University of Vienna
Austria



Angelo Squeri
GVM Care &
Research, Italy



Dipak K Dube
SUNY Upstate
Medical University
USA



Wilbert S Aronow
New York
Medical College, USA



Todd C Villines
Uniformed Services
University, USA



Weibin Shi
University of
California, USA



Jose G Diez
Texas Heart Institute
USA



Mouaz H Al-Mallah
Wayne State
University, USA



S Wamique Yusuf
University of Texas
MD Anderson Cancer
Center, USA



Hamid Boulares
Louisiana State
University Health
Science Center
USA



John G Edwards
New York Medical
College, USA



John Hwa
Cardiovascular
Research Center
USA



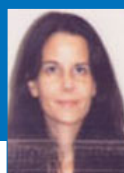
Li lang
Guangxi Medical
University, China



Edo Kaluski
University Hospital
USA



P Christian Schulze
Columbia University
USA



R Madonna
University of Texas
USA



Clifford L Cua
Ohio State University
USA



Anindita Das
Virginia Common
wealth University
USA



Jason D Gardner
Louisiana State
University, USA



M Cilingiroglu
University of
Pittsburgh, USA



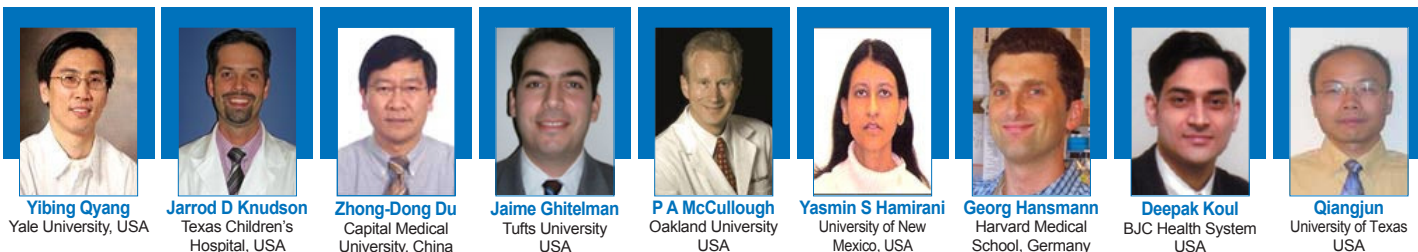
Dongming Hou
Indiana University
USA



John C Quindry
Auburn University
USA

OMICS Publishing Group

5716 Corsa Ave., Suite 110, Westlake, Los Angeles, CA 91362-7354, USA, E-mail: editor.jcec@omicsonline.com,
Phone: +1- 650-268-9744, Fax: +1-650-618-1414, Toll free: +1-800-216-6499



Yibing Qyang
Yale University, USA

Jarrod D Knudson
Texas Children's Hospital, USA

Zhong-Dong Du
Capital Medical University, China

Jaime Ghitelman
Tufts University USA

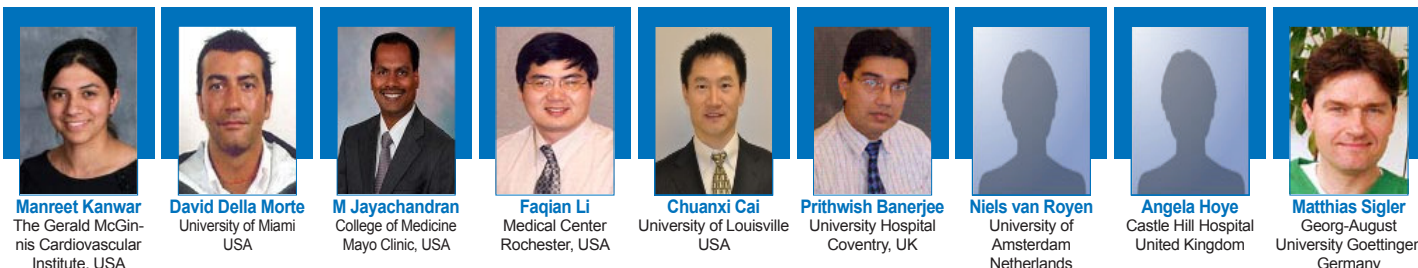
P A McCullough
Oakland University USA

Yasmin S Hamirani
University of New Mexico, USA

Georg Hansmann
Harvard Medical School, Germany

Deepak Koul
BJC Health System USA

Qiangjun
University of Texas USA



Manreet Kanwar
The Gerald McGinnis Cardiovascular Institute, USA

David Della Morte
University of Miami USA

M Jayachandran
College of Medicine Mayo Clinic, USA

Faqian Li
Medical Center Rochester, USA

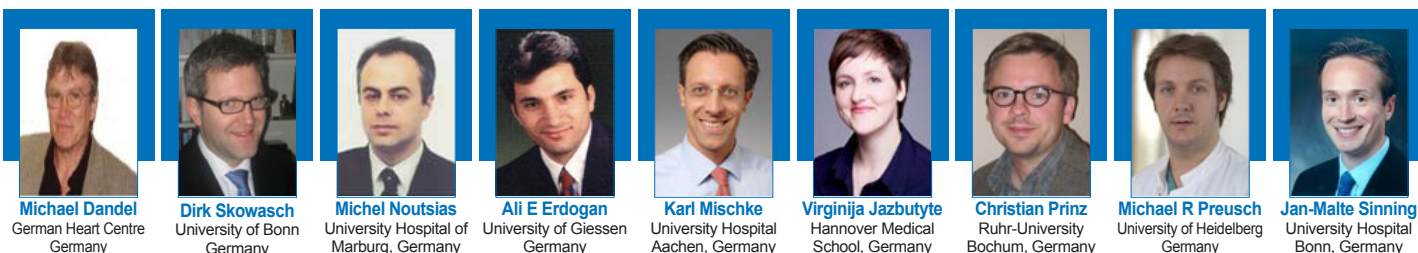
Chuanxi Cai
University of Louisville USA

Prithwish Banerjee
University Hospital Coventry, UK

Niels van Royen
University of Amsterdam Netherlands

Angela Hoyer
Castle Hill Hospital United Kingdom

Matthias Sigler
Georg-August University Goettingen Germany



Michael Dandel
German Heart Centre Germany

Dirk Skowasch
University of Bonn Germany

Michel Noutsias
University Hospital of Marburg, Germany

Ali E Erdogan
University of Giessen Germany

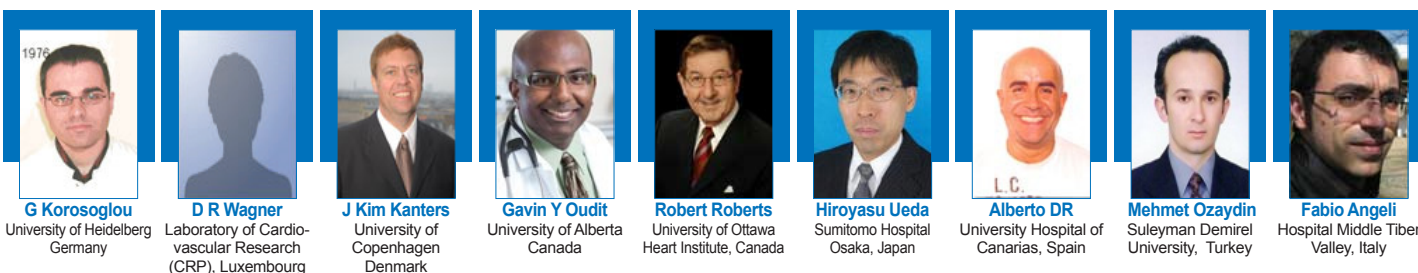
Karl Mischke
University Hospital Aachen, Germany

Virginija Jazbutyte
Hannover Medical School, Germany

Christian Prinz
Ruhr-University Bochum, Germany

Michael R Preusch
University of Heidelberg Germany

Jan-Malte Sinning
University Hospital Bonn, Germany



G Korosoglou
University of Heidelberg Germany

D R Wagner
Laboratory of Cardiovascular Research (CRP), Luxembourg

J Kim Kanters
University of Copenhagen Denmark

Gavin Y Oudit
University of Alberta Canada

Robert Roberts
University of Ottawa Heart Institute, Canada

Hiroyasu Ueda
Sumitomo Hospital Osaka, Japan

Alberto DR
University Hospital of Canarias, Spain

Mehmet Ozaydin
Suleyman Demirel University, Turkey

Fabio Angeli
Hospital Middle Tiber Valley, Italy



Alberto De Caterina
Catholic University of the Sacred Heart Italy

Daniele Brunetti
University of Foggia Italy

Francesco Dentali
Insubria University Italy

Cesare de Gregorio
University of Messina, Italy

Yidong Wei
Tongji University China

Anne A Knowlton
University of California, USA

H Taegtmeier
University of Texas USA

Burton M Altura
SUNY Downstate Medical Center Brooklyn, USA

Mei-Zhen Cui
University of Tennessee, USA



Costin N. Ionescu
Hospital of Saint Raphael, USA

Jaime Ghitelman
Tufts University USA

A Eirin Massat
Mayo Clinic USA

P Xuejun Huang
San Diego Regenerative Medicine Institute USA

Prithwish Banerjee
University of Warwick United Kingdom

Daniel R Wagner
Laboratory of Cardiovascular Research Luxembourg

J Kim Kanters
University of Copenhagen Denmark

P Theofilou
Panteion University Greece

OMICS Publishing Group

5716 Corsa Ave., Suite 110, Westlake, Los Angeles, CA 91362-7354, USA, E-mail: editor.jceec@omicsonline.com, Phone: +1- 650-268-9744, Fax: +1-650-618-1414, Toll free: +1-800-216-6499